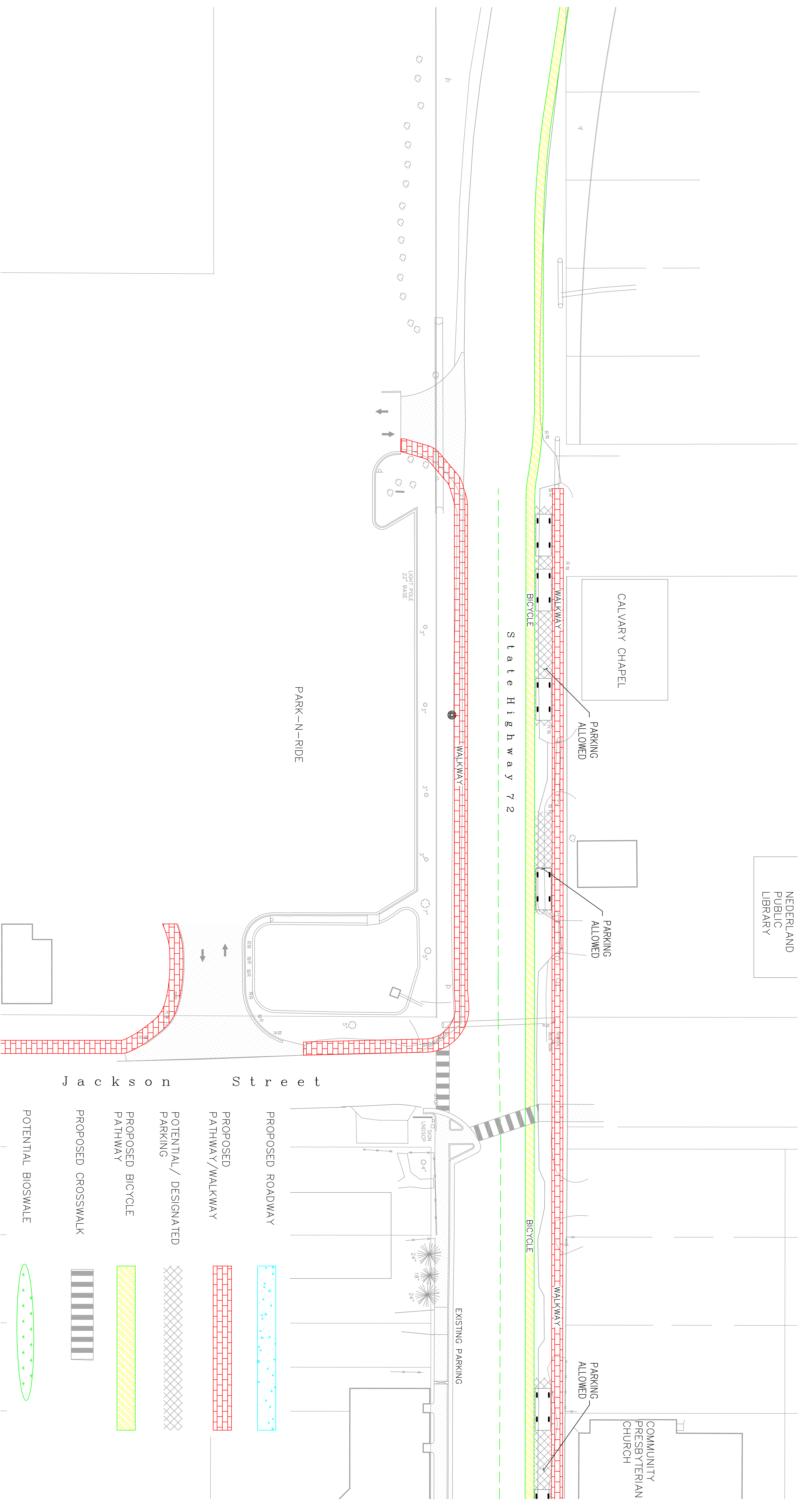


# TOWN OF NEDERLAND PEDESTRIAN ENHANCEMENTS

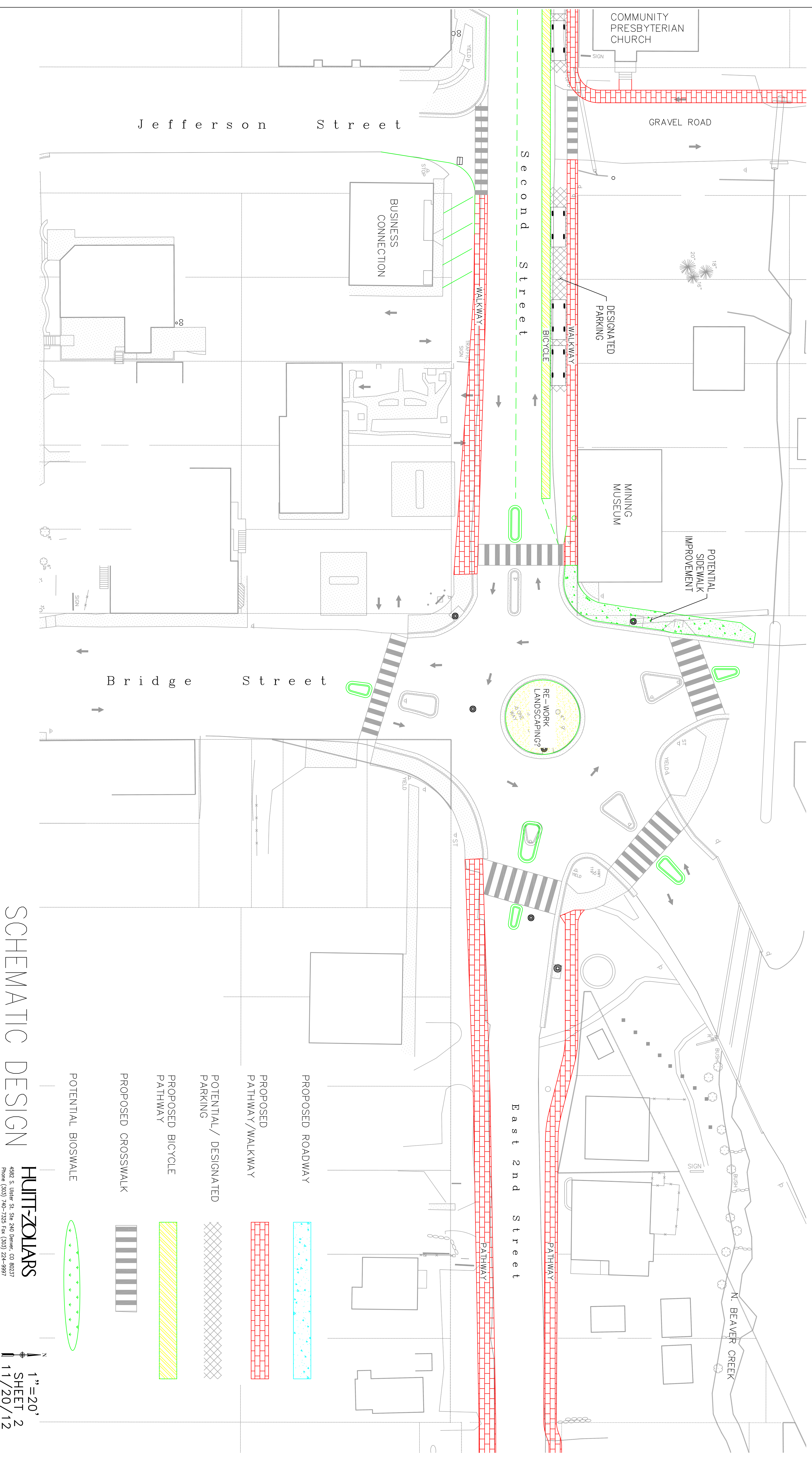


SCHEMATIC DESIGN

**HUTT-ZOLLARS**  
4582 S. JENSEN ST. STE. 240 DENVER, CO 80237  
Phone: (303) 740-7325 Fax: (303) 224-9997

1"=20'  
SHEET 1  
11/20/12

# TOWN OF NEDERLAND PEDESTRIAN ENHANCEMENTS



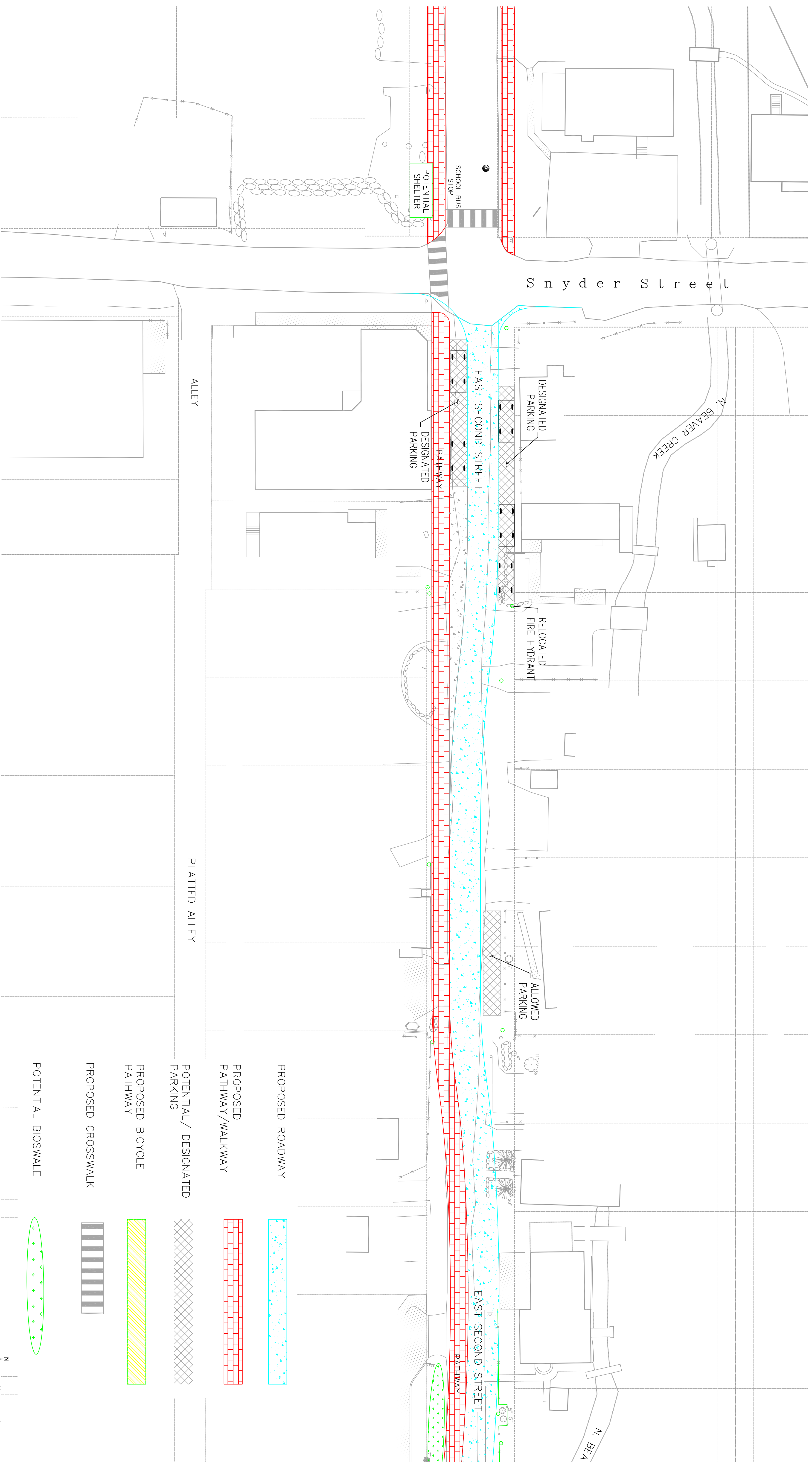
SCHEMATIC DESIGN

**HUTT-ZOLLARS**  
 4582 S. Lullier St. Ste. 240 Denver, CO 80237  
 Phone (303) 740-7325 Fax (303) 224-9997

1" = 20'  
 SHEET 2  
 11/20/12

- PROPOSED ROADWAY
- PROPOSED PATHWAY/WALKWAY
- POTENTIAL/ DESIGNATED PARKING
- PROPOSED BICYCLE PATHWAY
- PROPOSED CROSSWALK
- POTENTIAL BIOSWALE

# TOWN OF NEDERLAND PEDESTRIAN ENHANCEMENTS



SCHEMATIC DESIGN

**HUTT-ZOLLARS**  
4582 S. JENSEN ST. STE. 240 DENVER, CO 80237  
PHONE (303) 740-3285 FAX (303) 224-9997

1" = 20'  
SHEET 3  
11/20/12

# TOWN OF NEDERLAND PEDESTRIAN ENHANCEMENTS



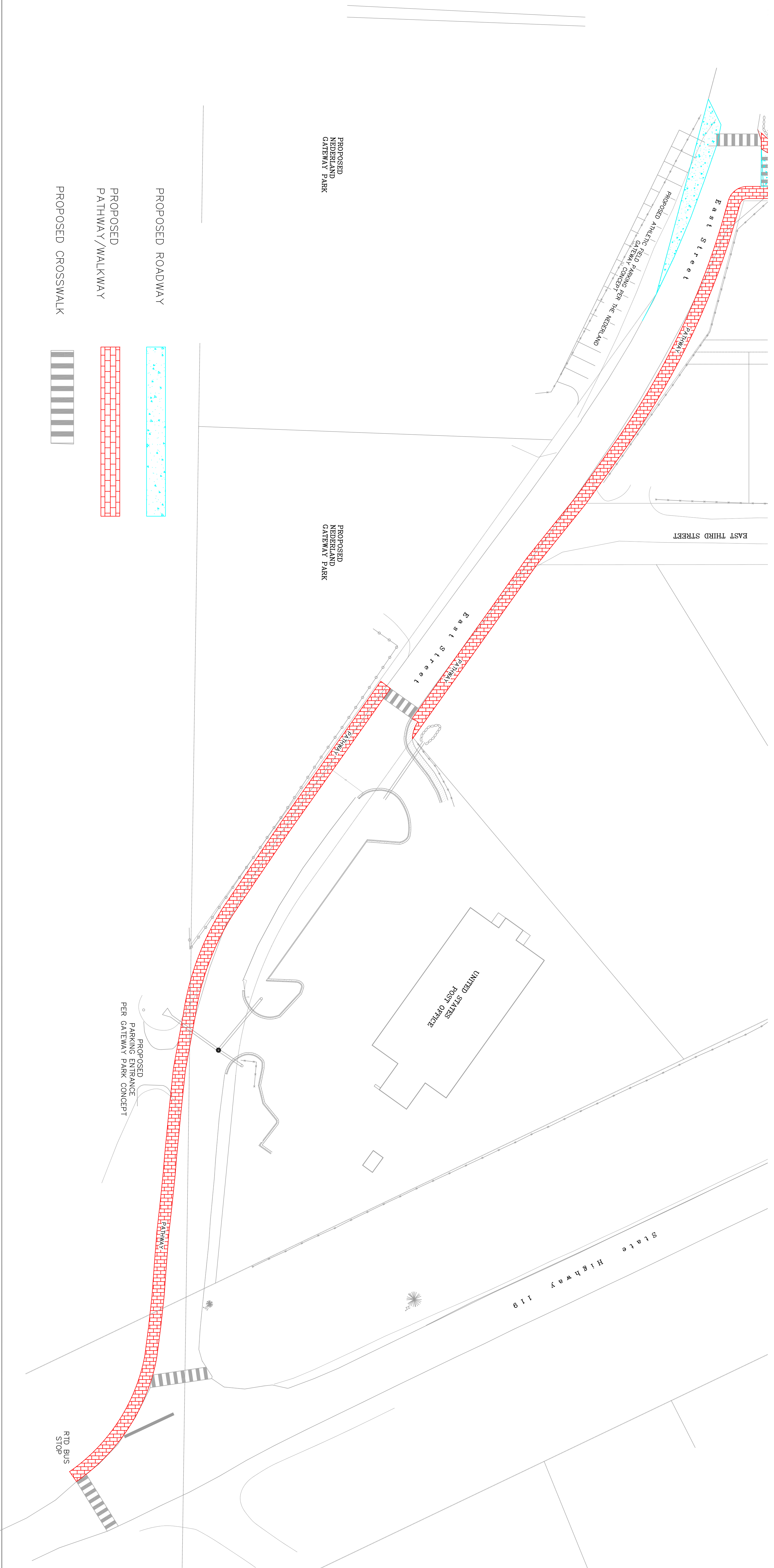
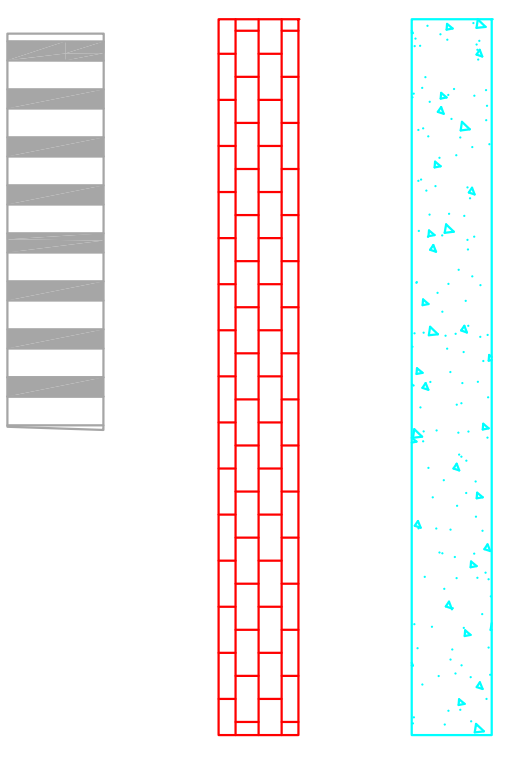
SCHEMATIC DESIGN

**HUTT-ZOLLARS**  
4582 S. JENSEN ST. STE. 200 DENVER, CO 80237  
PHONE (303) 740-3255 FAX (303) 224-9997

1"=20'  
SHEET 4  
11/20/12

# TOWN OF NEDERLAND PEDESTRIAN ENHANCEMENTS

- PROPOSED ROADWAY
- PROPOSED PATHWAY/WALKWAY
- PROPOSED CROSSWALK



SCHEMATIC DESIGN

HUTT-ZOLLARS

4582 S. LINNIE ST. STE. 200 DENVER, CO 80237  
 Phone: (303) 740-7325 Fax: (303) 224-9997

1" = 30'  
 SHEET 5  
 11/20/12

