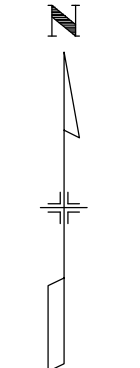


**PLAN**  
STATE HWY 72 / 2ND ST.  
LINE 620 / 720 HCL



I:\proj\16032101 Nederland\11\_DESIGN-CADD\C3D\SHEETS\160321\_30 CST.dwg 8/26/13 17:01  
HUITT-ZOLLARS COPYRIGHT © 2011

Computer File Information			
Creation Date:	11/01/2012	Initials:	SEL
Last Modification Date:	08/26/2013	Initials:	DKIM
Full Path:	16032101\...\C3D\SHEETS		
Drawing File Name:	160321_30 CST.dwg		
AutoCAD Version:	C3D 2011	Units:	English

Sheet Revisions			
Date:	Comments	Init.	
			(R-)
			(R-)
			(R-)

**TOWN OF NEDERLAND**  
Town of Nederland  
45 West First Street  
P O Box 396  
Nederland, Colorado 80466

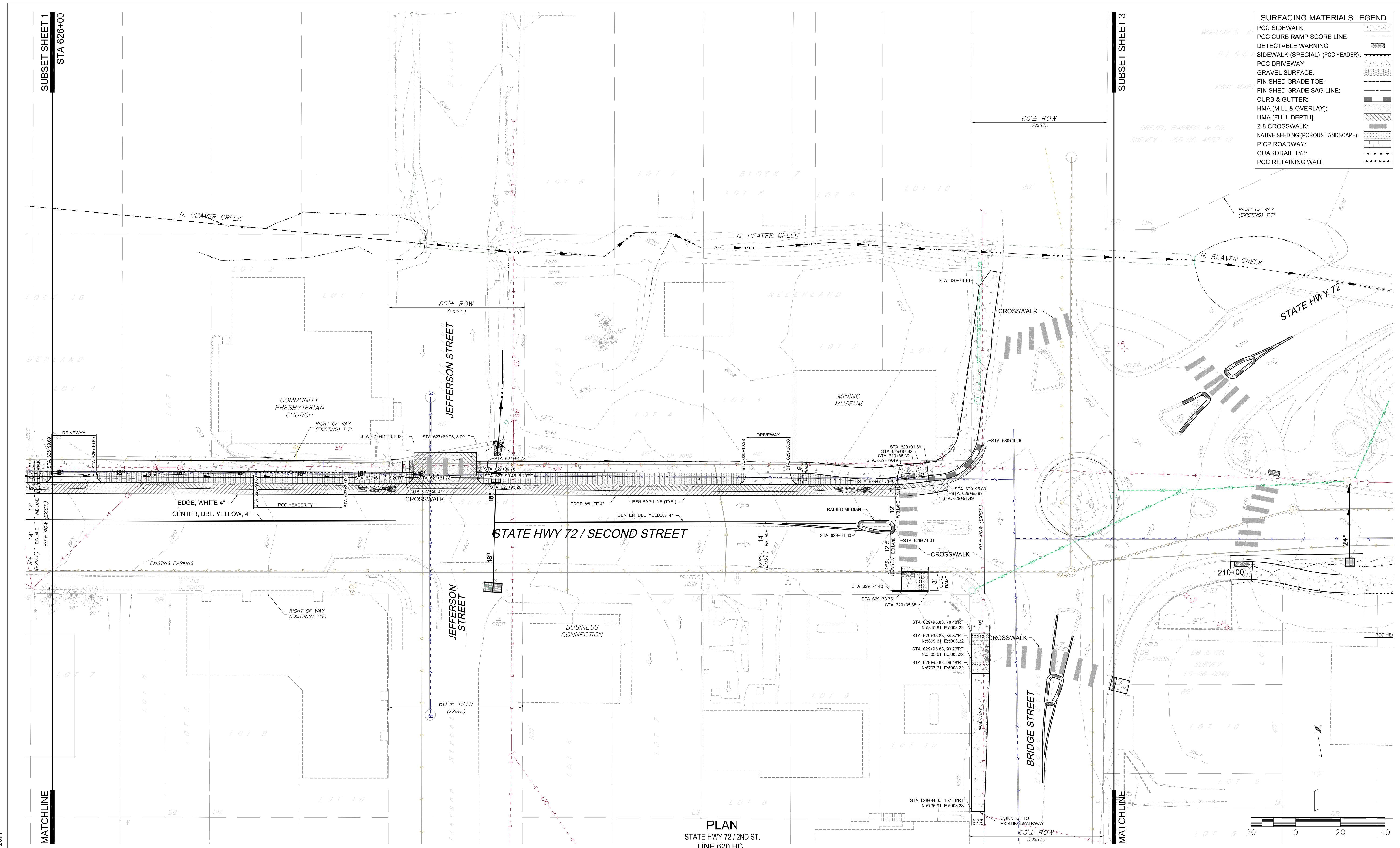
**HUITT-ZOLLARS**  
4582 S. Ulster St. Ste 240  
Phone (303) 740-7325  
Denver, CO 80237  
Fax (303) 224-9997

- Progress Print -  
No Revisions:  
Revised:  
Void:

NEDERLAND PEDESTRIAN ENHANCEMENT DESIGN (NEDPED) AND STORM WATER MANAGEMENT IMPROVEMENT PROJECT			
SITE PLAN			
STATE HWY72 / 2ND ST (LINES 620 & 720)			
Designer:	SEL	Structure Numbers	
Detailer:	DKIM	Sheet Subsets	
Sheet Subset:	CST	Subset Sheets:	1 of 7

Project No. / Code  
STU M935-003  
18952 (Region 4)  
Sheet Number **31**

SURFACING MATERIALS LEGEND	
PCC SIDEWALK:	[Symbol]
PCC CURB RAMP SCORE LINE:	[Symbol]
DETECTABLE WARNING:	[Symbol]
SIDEWALK (SPECIAL) (PCC HEADER):	[Symbol]
PCC DRIVEWAY:	[Symbol]
GRAVEL SURFACE:	[Symbol]
FINISHED GRADE TOE:	[Symbol]
FINISHED GRADE SAG LINE:	[Symbol]
CURB & GUTTER:	[Symbol]
HMA (MILL & OVERLAY):	[Symbol]
HMA (FULL DEPTH):	[Symbol]
2-8 CROSSWALK:	[Symbol]
NATIVE SEEDING (POROUS LANDSCAPE):	[Symbol]
PICP ROADWAY:	[Symbol]
GUARDRAIL TY3:	[Symbol]
PCC RETAINING WALL:	[Symbol]



PLAN  
STATE HWY 72 / 2ND ST.  
LINE 620 HCL



Computer File Information			
Creation Date:	11/01/2012	Initials:	SEL
Last Modification Date:	08/26/2013	Initials:	DKIM
Full Path:	16032101\...\C3D\SHEETS		
Drawing File Name:	160321 30 CST.dwg		
AutoCAD Version:	C3D 2011	Units:	English

Sheet Revisions			
Date:	Comments	Init.	
			(R-)
			(R-)
			(R-)

TOWN OF NEDERLAND  
Town of Nederland  
45 West First Street  
P O Box 396  
Nederland, Colorado 80466

HUITT-ZOLLARS  
4582 S. Ulster St. Ste 240  
Phone (303) 740-7325  
Denver, CO 80237  
Fax (303) 224-9997

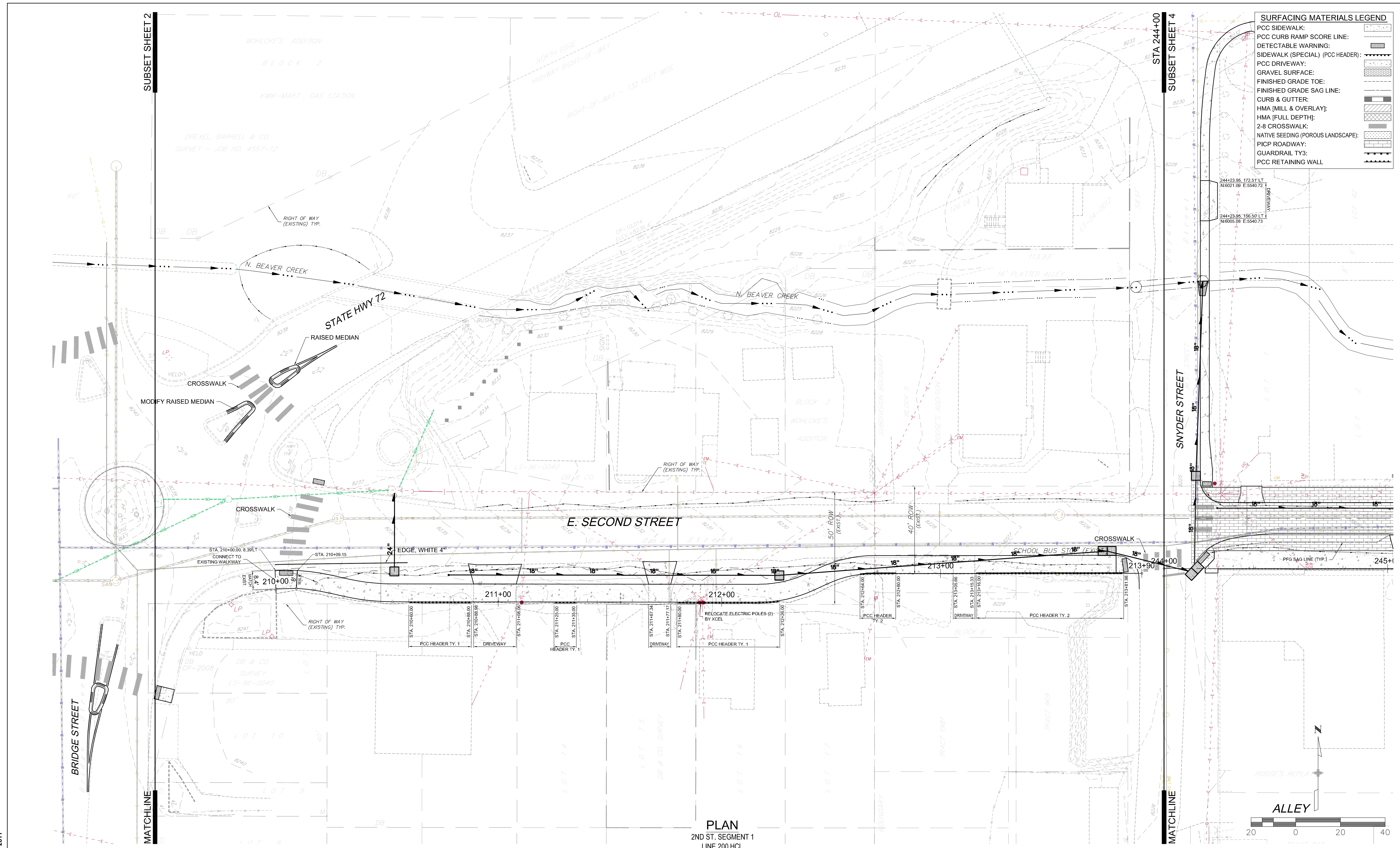
- Progress Print -  
No Revisions:  
Revised:  
Void:

NEDERLAND PEDESTRIAN ENHANCEMENT DESIGN (NEDPED) AND STORM WATER MANAGEMENT IMPROVEMENT PROJECT			
SITE PLAN			
STATE HWY 72 / 2ND ST (LINES 620 & 720)			
Designer:	SEL	Structure Numbers	
Detailer:	DKIM	Structure Numbers	
Sheet Subset:	CST	Subset Sheets:	2 of 7

Project No. / Code	
STU M935-003	
18952 (Region 4)	
Sheet Number	32

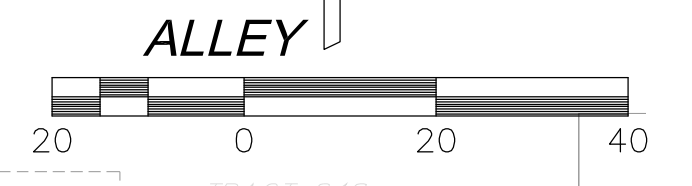
I:\proj\16032101 Nederland\11\_DESIGN-CADD\C3D\SHEETS\160321 30 CST.dwg 8/26/13 17:01 HUITT-ZOLLARS COPYRIGHT © 2011

I:\proj\16032101 Netherland\11 DESIGN-CADD\C3D\SHEETS\160321 30 CST.dwg 8/26/13 17:00  
 HUITT-ZOLLARS COPYRIGHT © 2011



SURFACING MATERIALS LEGEND	
PCC SIDEWALK:	[Symbol]
PCC CURB RAMP SCORE LINE:	[Symbol]
DETECTABLE WARNING:	[Symbol]
SIDEWALK (SPECIAL) (PCC HEADER):	[Symbol]
PCC DRIVEWAY:	[Symbol]
GRAVEL SURFACE:	[Symbol]
FINISHED GRADE TOE:	[Symbol]
FINISHED GRADE SAG LINE:	[Symbol]
CURB & GUTTER:	[Symbol]
HMA (MILL & OVERLAY):	[Symbol]
HMA (FULL DEPTH):	[Symbol]
2-8 CROSSWALK:	[Symbol]
NATIVE SEEDING (POROUS LANDSCAPE):	[Symbol]
PICP ROADWAY:	[Symbol]
GUARDRAIL TY3:	[Symbol]
PCC RETAINING WALL:	[Symbol]

PLAN  
 2ND ST. SEGMENT 1  
 LINE 200 HCL



Computer File Information

Creation Date:	11/01/2012	Initials:	SEL
Last Modification Date:	08/26/2013	Initials:	DKIM
Full Path:	16032101\...C3D\SHEETS		
Drawing File Name:	160321 30 CST.dwg		
AutoCAD Version:	C3D 2011	Units:	English

Sheet Revisions

Date:	Comments	Init.

TOWN OF  
 NETHERLAND  
 Town of Netherland  
 45 West First Street  
 P O Box 396  
 Netherland, Colorado 80466

HUITT-ZOLLARS  
 4582 S. Ulster St. Ste 240  
 Phone (303) 740-7325  
 Denver, CO 80237  
 Fax (303) 224-9997

- Progress Print -

No Revisions:	
Revised:	
Void:	

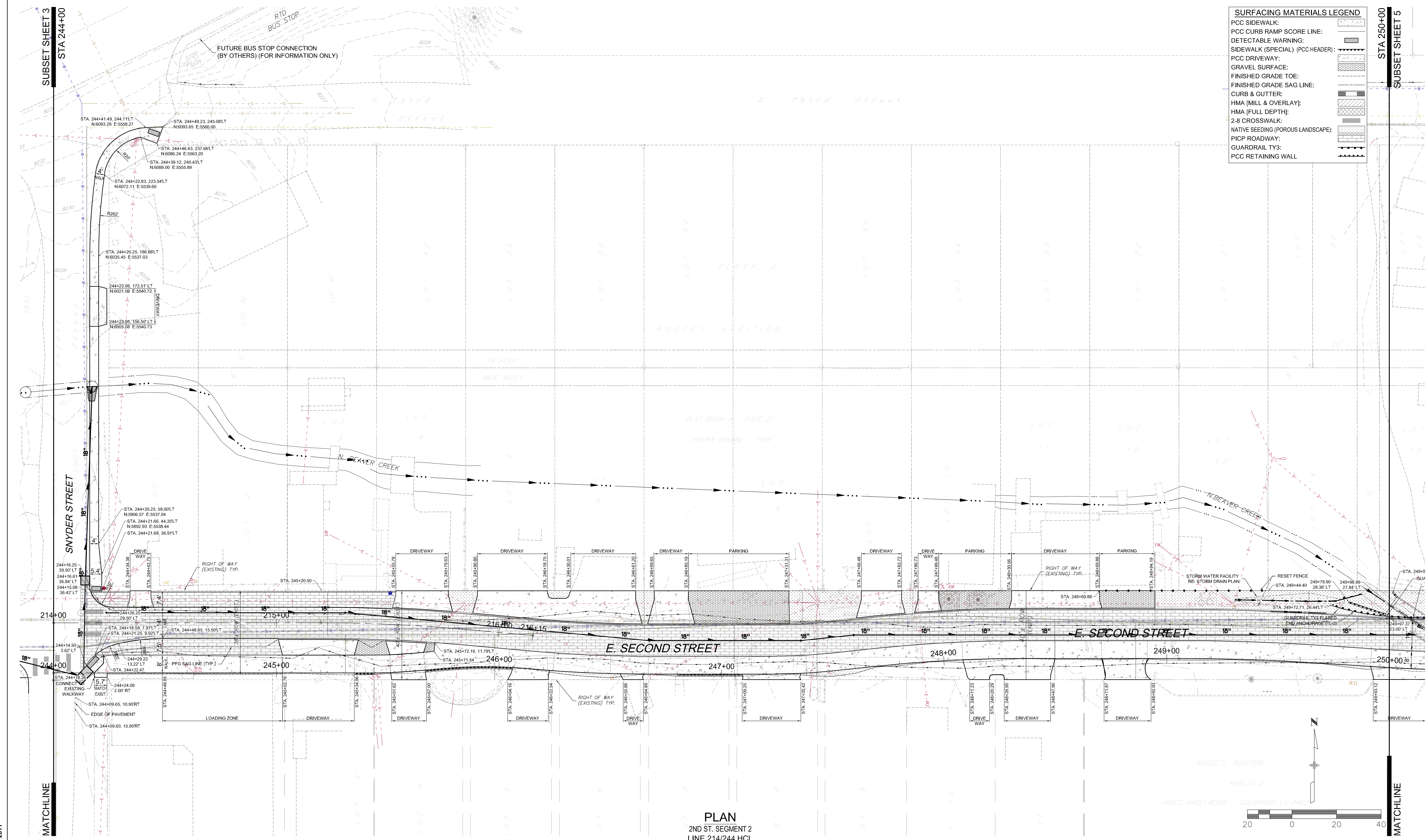
NEDERLAND PEDESTRIAN ENHANCEMENT DESIGN (NEDPED) AND STORM WATER MANAGEMENT IMPROVEMENT PROJECT

SITE PLAN	
2ND STREET SEGMENT 1 (LINE 210)	
Designer:	SEL
Detailer:	DKIM
Sheet Subset:	CST

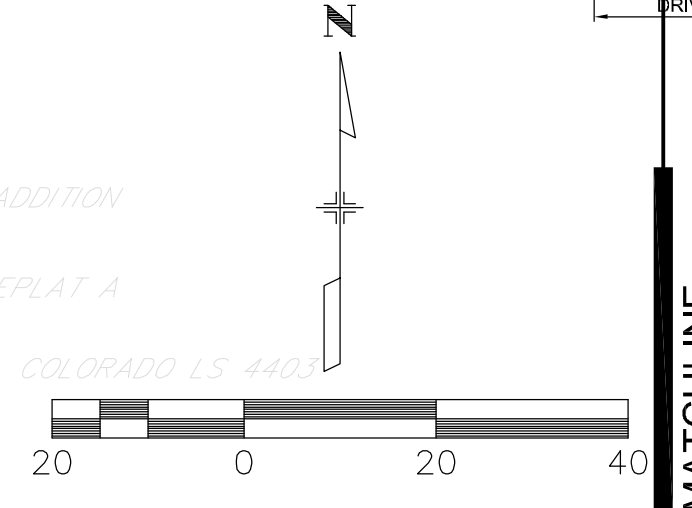
Project No. / Code

STU M935-003
18952 (Region 4)
Sheet Number 33

SURFACING MATERIALS LEGEND	
PCC SIDEWALK:	
PCC CURB RAMP SCORE LINE:	
DETECTABLE WARNING:	
SIDEWALK (SPECIAL) (PCC HEADER):	
PCC DRIVEWAY:	
GRAVEL SURFACE:	
FINISHED GRADE TOE:	
FINISHED GRADE SAG LINE:	
CURB & GUTTER:	
HMA (MILL & OVERLAY):	
HMA (FULL DEPTH):	
2-8 CROSSWALK:	
NATIVE SEEDING (POROUS LANDSCAPE):	
PICP ROADWAY:	
GUARDRAIL TY3:	
PCC RETAINING WALL:	



PLAN  
2ND ST. SEGMENT 2  
LINE 214/244 HCL



I:\proj\16032101 Nederland\11\_DESIGN-CADD\C3D\SHEETS\160321\_30 CST.dwg 8/26/13 17:00  
HUITT-ZOLLARS COPYRIGHT © 2011

Computer File Information			
Creation Date:	11/01/2012	Initials:	SEL
Last Modification Date:	08/26/2013	Initials:	DKIM
Full Path:	16032101\...\C3D\SHEETS		
Drawing File Name:	160321_30 CST.dwg		
AutoCAD Version:	C3D 2011	Units:	English

Sheet Revisions			
Date:	Comments	Init.	
			(R-)
			(R-)
			(R-)
			(R-)



Town of Nederland  
45 West First Street  
P O Box 396  
Nederland, Colorado 80466



4582 S. Ulster St. Ste 240  
Phone (303) 740-7325

Denver, CO 80237  
Fax (303) 224-9997

- Progress Print -

No Revisions:

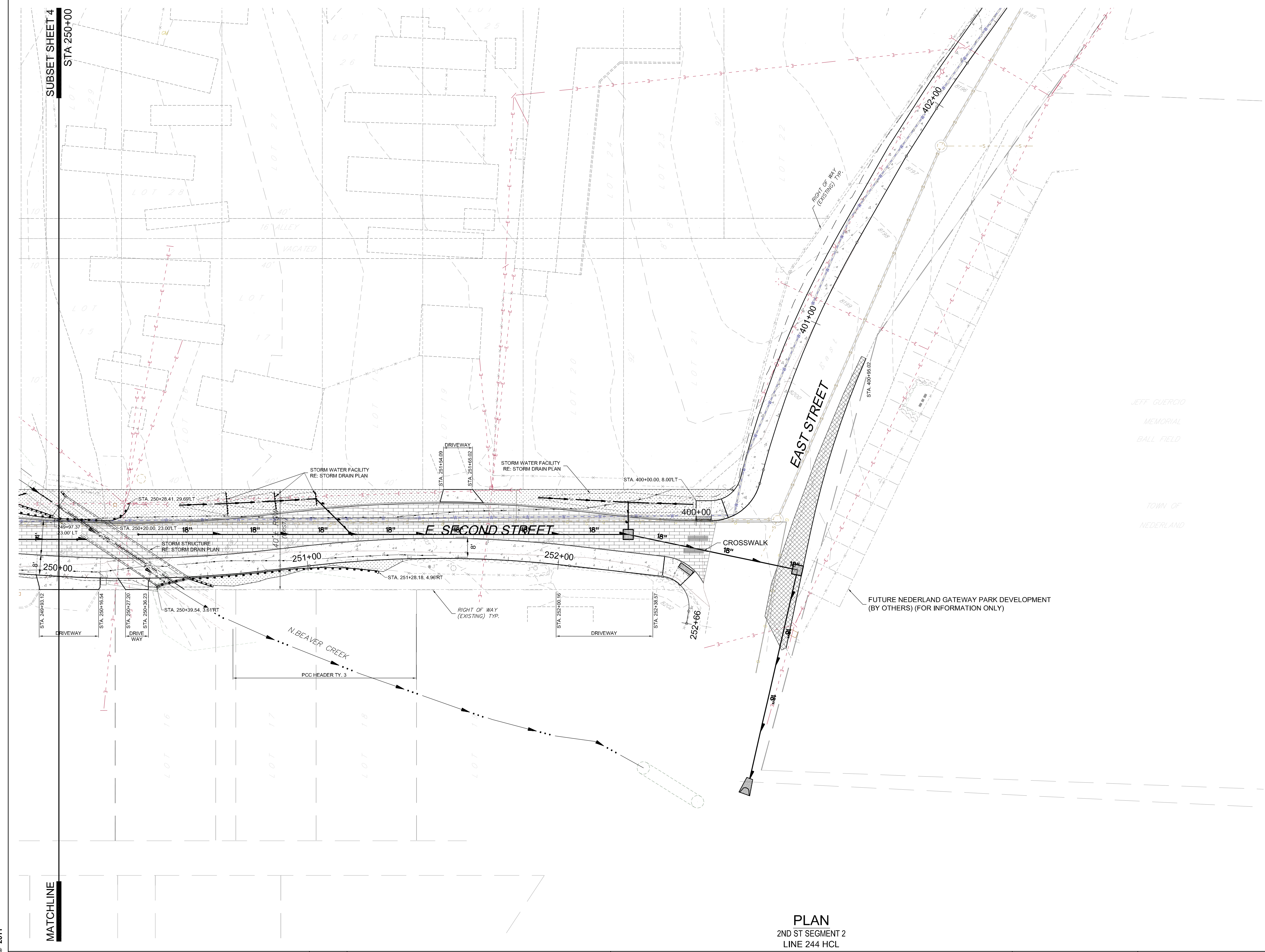
Revised:

Void:

NEDERLAND PEDESTRIAN ENHANCEMENT DESIGN (NEDPED) AND STORM WATER MANAGEMENT IMPROVEMENT PROJECT			
SITE PLAN			
2ND STREET SEGMENT 1 (LINE 210)			
Designer:	SEL	Structure Numbers	
Detailer:	DKIM		
Sheet Subset:	CST	Subset Sheets:	4 of 7

Project No. / Code	
STU M935-003	
18952 (Region 4)	
Sheet Number	34

SURFACING MATERIALS LEGEND	
PCC SIDEWALK:	
PCC CURB RAMP SCORE LINE:	
DETECTABLE WARNING:	
SIDEWALK (SPECIAL) (PCC HEADER):	
PCC DRIVEWAY:	
GRAVEL SURFACE:	
FINISHED GRADE TOE:	
FINISHED GRADE SAG LINE:	
CURB & GUTTER:	
HMA (MILL & OVERLAY):	
HMA (FULL DEPTH):	
2-8 CROSSWALK:	
NATIVE SEEDING (POROUS LANDSCAPE):	
PICP ROADWAY:	
GUARDRAIL TY3:	
PCC RETAINING WALL:	



PLAN  
2ND ST SEGMENT 2  
LINE 244 HCL

I:\proj\16032101 Nederland\11\_DESIGN-CADD\C3D\SHEETS\160321\_30 CST.dwg 8/26/13 17:00  
HUITT-ZOLLARS COPYRIGHT © 2011

Computer File Information			
Creation Date:	11/01/2012	Initials:	SEL
Last Modification Date:	08/26/2013	Initials:	DKIM
Full Path:	16032101\...\C3D\SHEETS		
Drawing File Name:	160321_30 CST.dwg		
AutoCAD Version:	C3D 2011	Units:	English

Sheet Revisions			
Date:	Comments	Init.	
			(R-)
			(R-)
			(R-)

**TOWN OF NEDERLAND**  
45 West First Street  
P O Box 396  
Nederland, Colorado 80466

**HUITT-ZOLLARS**  
4582 S. Ulster St. Ste 240  
Phone (303) 740-7325  
Denver, CO 80237  
Fax (303) 224-9997

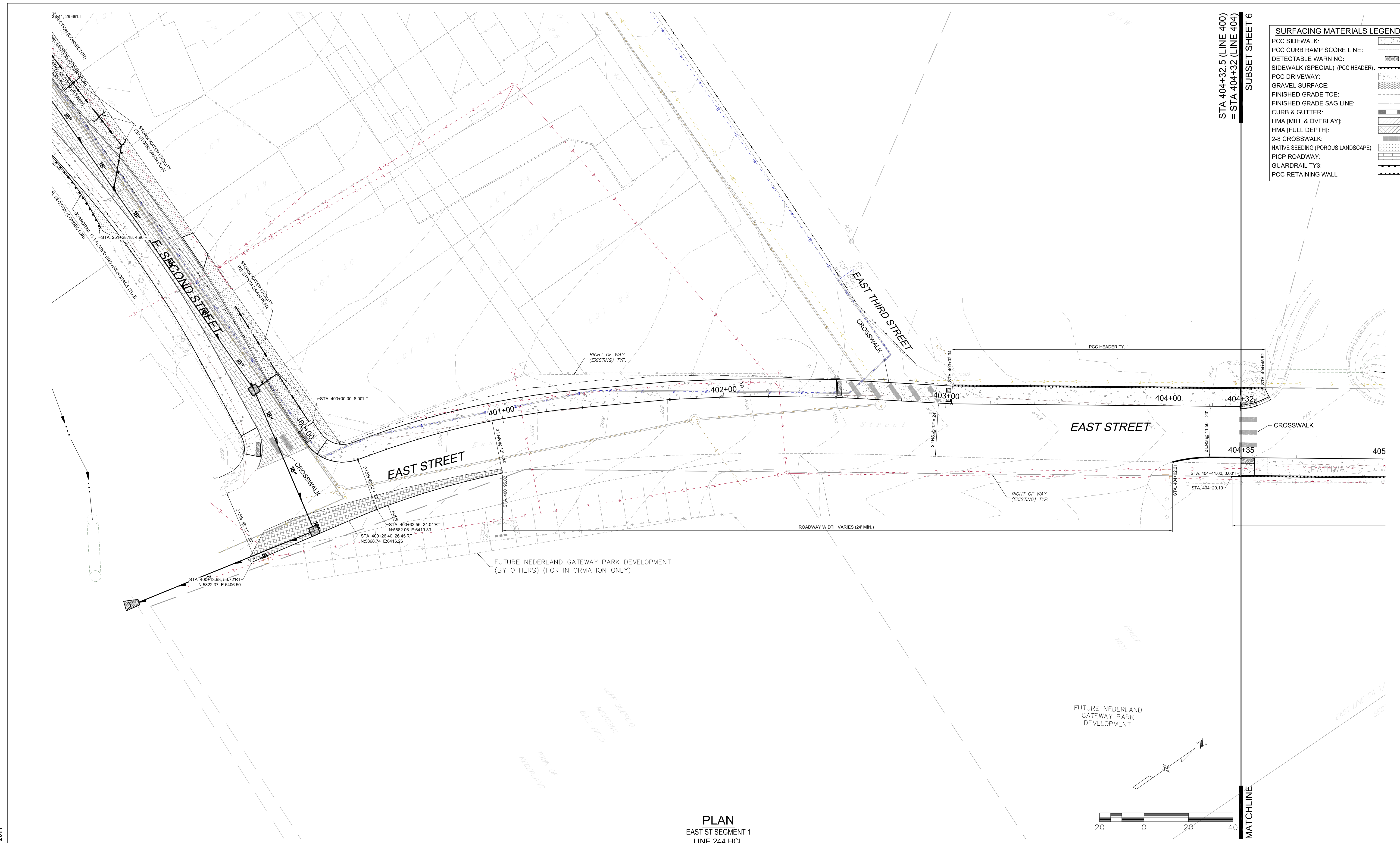
- Progress Print -

No Revisions:	
Revised:	
Void:	

NEDERLAND PEDESTRIAN ENHANCEMENT DESIGN (NEDPED) AND STORM WATER MANAGEMENT IMPROVEMENT PROJECT			
SITE PLAN			
2ND STREET SEGMENT 1 (LINE 210)			
Designer:	SEL	Structure Numbers	
Detailer:	DKIM		
Sheet Subset:	CST	Subset Sheets:	5 of 7

Project No. / Code	STU M935-003
	18952 (Region 4)
Sheet Number	35

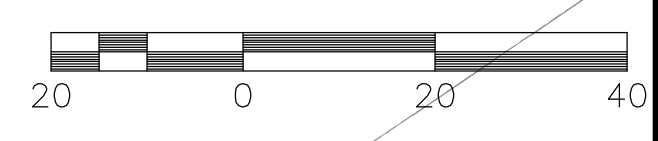
I:\proj\16032101 Nederland\11\_DESIGN-CADD\C3D\SHEETS\160321\_30 CST.dwg 8/26/13 16:59  
 HUITT-ZOLLARS COPYRIGHT © 2011



STA 404+32.5 (LINE 400)  
 = STA 404+32 (LINE 404)  
 SUBSET SHEET 6

SURFACING MATERIALS LEGEND	
PCC SIDEWALK:	[Symbol]
PCC CURB RAMP SCORE LINE:	[Symbol]
DETECTABLE WARNING:	[Symbol]
SIDEWALK (SPECIAL) (PCC HEADER):	[Symbol]
PCC DRIVEWAY:	[Symbol]
GRAVEL SURFACE:	[Symbol]
FINISHED GRADE TOE:	[Symbol]
FINISHED GRADE SAG LINE:	[Symbol]
CURB & GUTTER:	[Symbol]
HMA [MILL & OVERLAY]:	[Symbol]
HMA [FULL DEPTH]:	[Symbol]
2-8 CROSSWALK:	[Symbol]
NATIVE SEEDING (POROUS LANDSCAPE):	[Symbol]
PICP ROADWAY:	[Symbol]
GUARDRAIL TY3:	[Symbol]
PCC RETAINING WALL:	[Symbol]

PLAN  
 EAST ST SEGMENT 1  
 LINE 244 HCL



Computer File Information			
Creation Date:	11/01/2012	Initials:	SEL
Last Modification Date:	08/26/2013	Initials:	DKIM
Full Path:	16032101\...\C3D\SHEETS		
Drawing File Name:	160321_30 CST.dwg		
AutoCAD Version:	C3D 2011	Units:	English

Sheet Revisions			
Date:	Comments	Init.	

**TOWN OF NEDERLAND**  
 Town of Nederland  
 45 West First Street  
 P O Box 396  
 Nederland, Colorado 80466

**HUITT-ZOLLARS**  
 4582 S. Ulster St. Ste 240  
 Phone (303) 740-7325  
 Denver, CO 80237  
 Fax (303) 224-9997

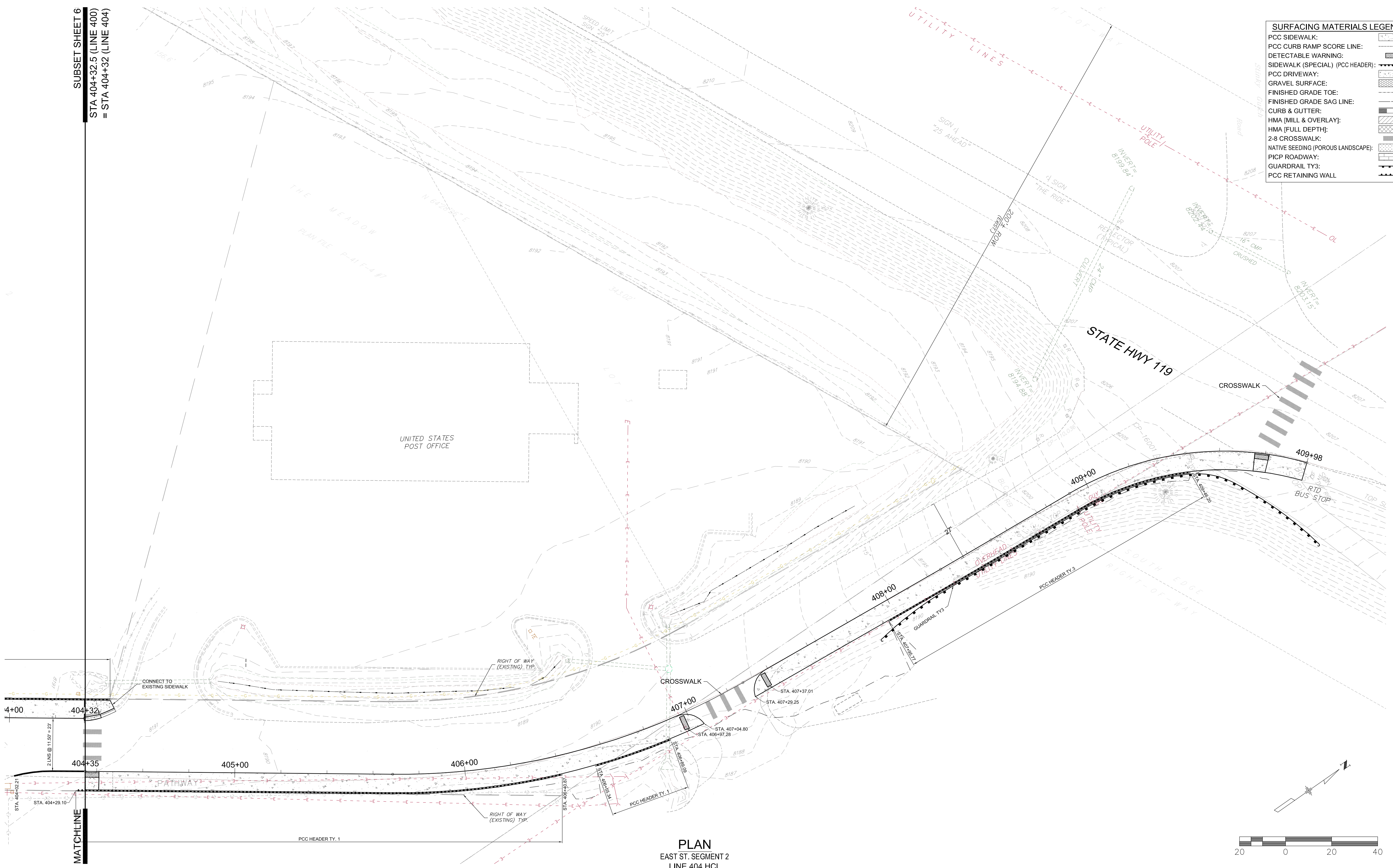
- Progress Print -  
 No Revisions:  
 Revised:  
 Void:

NEDERLAND PEDESTRIAN ENHANCEMENT DESIGN (NEDPED) AND STORM WATER MANAGEMENT IMPROVEMENT PROJECT			
SITE PLAN			
EAST STREET SEGMENT 1 (LINE 400)			
Designer:	SEL	Structure Numbers:	
Detailer:	DKIM	Subset Sheets:	6 of 7
Sheet Subset:	CST		

Project No. / Code	
STU M935-003	
18952 (Region 4)	
Sheet Number	36

SUBSET SHEET 6  
 STA 404+32.5 (LINE 400)  
 = STA 404+32 (LINE 404)

SURFACING MATERIALS LEGEND	
PCC SIDEWALK:	[Symbol]
PCC CURB RAMP SCORE LINE:	[Symbol]
DETECTABLE WARNING:	[Symbol]
SIDEWALK (SPECIAL) (PCC HEADER):	[Symbol]
PCC DRIVEWAY:	[Symbol]
GRAVEL SURFACE:	[Symbol]
FINISHED GRADE TOE:	[Symbol]
FINISHED GRADE SAG LINE:	[Symbol]
CURB & GUTTER:	[Symbol]
HMA [MILL & OVERLAY]:	[Symbol]
HMA [FULL DEPTH]:	[Symbol]
2-8 CROSSWALK:	[Symbol]
NATIVE SEEDING (POROUS LANDSCAPE):	[Symbol]
PICP ROADWAY:	[Symbol]
GUARDRAIL TY3:	[Symbol]
PCC RETAINING WALL	[Symbol]




PLAN  
 EAST ST. SEGMENT 2  
 LINE 404 HCL

i:\proj\16032101 Nederland\11\_DESIGN-CADD\C3D\SHEETS\160321\_30\_CST.dwg 8/26/13 16:59  
 HUITT-ZOLLARS COPYRIGHT © 2011

Computer File Information			
Creation Date:	11/01/2012	Initials:	SEL
Last Modification Date:	08/26/2013	Initials:	DKIM
Full Path:	16032101\...\C3D\SHEETS		
Drawing File Name:	160321_30_CST.dwg		
AutoCAD Version:	C3D 2011	Units:	English

Sheet Revisions		
Date:	Comments	Init.


 Town of Nederland  
 45 West First Street  
 P O Box 396  
 Nederland, Colorado 80466

  
 4582 S. Ulster St. Ste 240  
 Phone (303) 740-7325  
 Denver, CO 80237  
 Fax (303) 224-9997

- Progress Print -	
No Revisions:	
Revised:	
Void:	

NEDERLAND PEDESTRIAN ENHANCEMENT DESIGN (NEDPED) AND STORM WATER MANAGEMENT IMPROVEMENT PROJECT			
SITE PLAN			
EAST STREET SEGMENT 2 (LINE 404)			
Designer:	SEL	Structure Numbers	
Detailer:	DKIM		
Sheet Subset:	CST	Subset Sheets:	7 of 7

Project No. / Code	STU M935-003
	18952 (Region 4)
Sheet Number	37