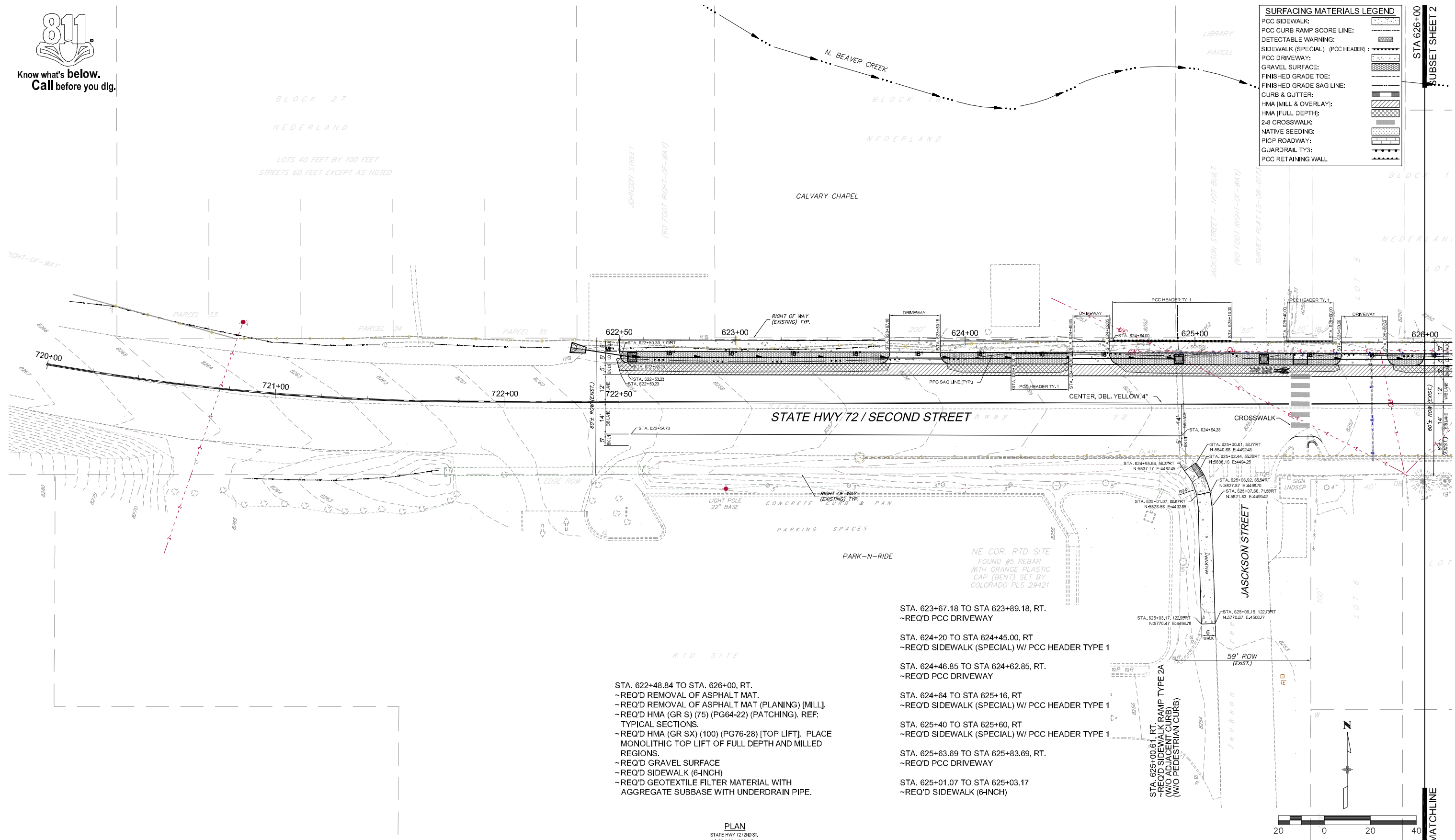




Know what's below.
Call before you dig.

T.1S. R.73W.

SURFACING MATERIALS LEGEND	
PCC SIDEWALK:	
PCC CURB RAMP SCORE LINE:	
DETECTABLE WARNING:	
SIDEWALK (SPECIAL) (PCC HEADER):	
PCC DRIVEWAY:	
GRAVEL SURFACE:	
FINISHED GRADE TOE:	
FINISHED GRADE SAG LINE:	
CURB & GUTTER:	
HMA (MILL & OVERLAY):	
HMA (FULL DEPTH):	
2-8 CROSSWALK:	
NATIVE SEEDING:	
PCP ROADWAY:	
GUARDRAIL TY3:	
PCC RETAINING WALL:	



- STA. 622+48.84 TO STA. 626+00, RT.
-REQ'D REMOVAL OF ASPHALT MAT.
-REQ'D REMOVAL OF ASPHALT MAT (PLANING) [MILL].
-REQ'D HMA (GR S) (75) (PG64-22) (PATCHING), REF: TYPICAL SECTIONS.
-REQ'D HMA (GR SX) (100) (PG76-28) [TOP LIFT]. PLACE MONOLITHIC TOP LIFT OF FULL DEPTH AND MILLED REGIONS.
-REQ'D GRAVEL SURFACE
-REQ'D SIDEWALK (6-INCH)
-REQ'D GEOTEXTILE FILTER MATERIAL WITH AGGREGATE SUBBASE WITH UNDERDRAIN PIPE.
- STA. 623+67.18 TO STA 623+89.18, RT.
-REQ'D PCC DRIVEWAY
- STA. 624+20 TO STA 624+45.00, RT
-REQ'D SIDEWALK (SPECIAL) W/ PCC HEADER TYPE 1
- STA. 624+46.85 TO STA 624+62.85, RT.
-REQ'D PCC DRIVEWAY
- STA. 624+64 TO STA 625+16, RT
-REQ'D SIDEWALK (SPECIAL) W/ PCC HEADER TYPE 1
- STA. 625+40 TO STA 625+60, RT
-REQ'D SIDEWALK (SPECIAL) W/ PCC HEADER TYPE 1
- STA. 625+63.69 TO STA 625+83.69, RT.
-REQ'D PCC DRIVEWAY
- STA. 625+01.07 TO STA 625+03.17
-REQ'D SIDEWALK (6-INCH)

PLAN
STATE HWY 72/2ND ST.
LINE: 620 / 720 HCL



MATCHLINE

I:\proj\16032101 Nederland\11_DESIGN-CADD\C3D\SHEETS\160321 30 CST.dwg 10/31/13 09:49
HUITT-ZOLLARS COPYRIGHT © 2011

Computer File Information			
Creation Date:	11/01/2012	Initials:	SEL
Last Modification Date:	10/30/2013	Initials:	DKIM
Full Path:	16032101\...\C3D\SHEETS		
Drawing File Name:	160321 30 CST.dwg		
AutoCAD Version:	C3D 2011	Units:	English

Sheet Revisions			
Date	Comments	Init.	
			(R-)
			(R-)
			(R-)

Town of Nederland
45 West First Street
P O Box 396
Nederland, Colorado 80466

HUITT-ZOLLARS
4582 S. Ulster St, Ste 240
Phone (303) 740-7325
Denver, CO 80237
Fax (303) 224-9997

- Progress Print -	
No Revisions:	
Revised:	
Void:	

NEDERLAND PEDESTRIAN ENHANCEMENT DESIGN (NEDPED) AND STORM WATER MANAGEMENT IMPROVEMENT PROJECT			
SITE PLAN			
STATE HWY72 / 2ND ST (LINES 620 & 720)			
Designer:	SEL	Structure Numbers	
Detailer:	DKIM		
Sheet Subset:	CST	Subset Sheets:	1 of 7

Project No. / Code	
STU M935-003	
18952 (Region 4)	
Sheet Number	31

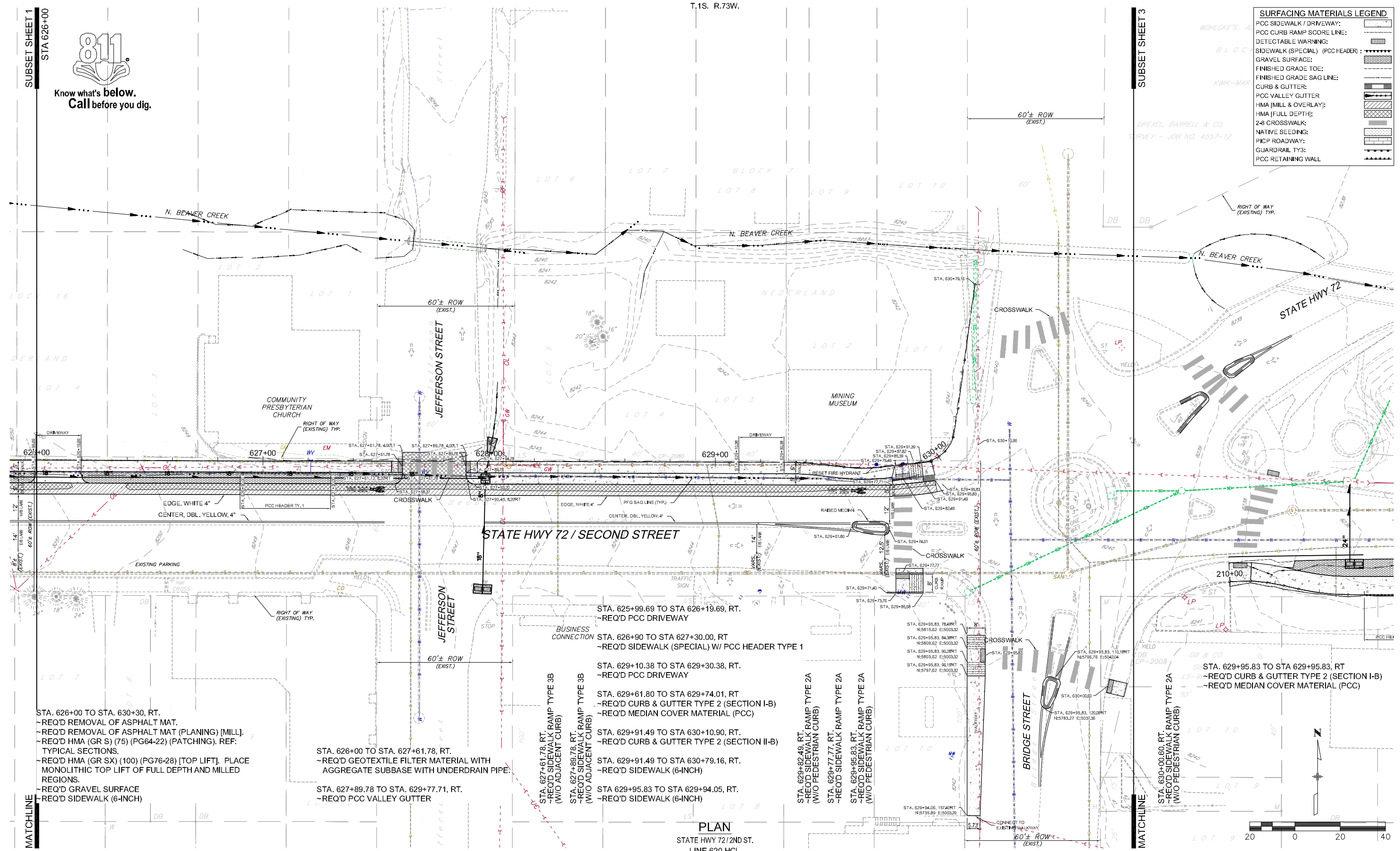
SUBSET SHEET 1
STA 626+00



Know what's below.
Call before you dig.

SURFACING MATERIALS LEGEND

PCC SIDEWALK / DRIVEWAY:	[Symbol]
PCC CURB RAMP SCORE LINE:	[Symbol]
DETECTABLE WARNING:	[Symbol]
SIDEWALK (SPECIAL) (PCC HEADER):	[Symbol]
GRAVEL SURFACE:	[Symbol]
FINISHED GRADE TOE:	[Symbol]
FINISHED GRADE SAG LINE:	[Symbol]
CURB & GUTTER:	[Symbol]
PCC VALLEY GUTTER:	[Symbol]
HMA (MILL & OVERLAY):	[Symbol]
HMA (FULL DEPTH):	[Symbol]
2-8 CROSSWALK:	[Symbol]
NATIVE SEEDING:	[Symbol]
PICP ROADWAY:	[Symbol]
GUARDRAIL TY3:	[Symbol]
PCC RETAINING WALL:	[Symbol]



STA. 626+00 TO STA. 630+30, RT.
 ~REQ'D REMOVAL OF ASPHALT MAT.
 ~REQ'D REMOVAL OF ASPHALT MAT (PLANING) [MILL].
 ~REQ'D HMA (GR S) (75) (PG64-22) (PATCHING). REF: TYPICAL SECTIONS.
 ~REQ'D HMA (GR SX) (100) (PG76-28) [TOP LIFT]. PLACE MONOLITHIC TOP LIFT OF FULL DEPTH AND MILLED REGIONS.
 ~REQ'D GRAVEL SURFACE
 ~REQ'D SIDEWALK (6-INCH)

STA. 626+00 TO STA. 627+61.78, RT.
 ~REQ'D GEOTEXTILE FILTER MATERIAL WITH AGGREGATE SUBBASE WITH UNDERDRAIN PIPE.

STA. 627+89.78 TO STA. 629+77.71, RT.
 ~REQ'D PCC VALLEY GUTTER

STA. 625+99.69 TO STA 626+19.69, RT.
 ~REQ'D PCC DRIVEWAY

STA. 626+90 TO STA 627+30.00, RT
 ~REQ'D SIDEWALK (SPECIAL) W/ PCC HEADER TYPE 1

STA. 629+10.38 TO STA 629+30.38, RT.
 ~REQ'D PCC DRIVEWAY

STA. 629+61.80 TO STA 629+74.01, RT
 ~REQ'D CURB & GUTTER TYPE 2 (SECTION I-B)
 ~REQ'D MEDIAN COVER MATERIAL (PCC)

STA. 629+91.49 TO STA 630+10.90, RT.
 ~REQ'D CURB & GUTTER TYPE 2 (SECTION II-B)

STA. 629+91.49 TO STA 630+79.16, RT.
 ~REQ'D SIDEWALK (6-INCH)

STA. 629+95.83 TO STA 629+94.05, RT.
 ~REQ'D SIDEWALK (6-INCH)

STA. 629+82.49, RT.
 ~REQ'D SIDEWALK RAMP TYPE 2A (W/O PEDESTRIAN CURB)

STA. 629+77.77, RT.
 ~REQ'D SIDEWALK RAMP TYPE 2A (W/O PEDESTRIAN CURB)

STA. 629+95.83, RT.
 ~REQ'D SIDEWALK RAMP TYPE 2A (W/O PEDESTRIAN CURB)

STA. 629+95.83 TO STA 629+95.83, RT
 ~REQ'D CURB & GUTTER TYPE 2 (SECTION I-B)
 ~REQ'D MEDIAN COVER MATERIAL (PCC)

STA. 630+00.60, RT.
 ~REQ'D SIDEWALK RAMP TYPE 2A (W/O PEDESTRIAN CURB)



I:\prof\16032101 Nederland\11_DESIGN\CADD\C3D\SHEETS\160321 30 CST.dwg 1/02/14 13:33
HUITT-ZOLLARS COPYRIGHT © 2011

Computer File Information

Creation Date:	11/01/2012	Initials:	SEL
Last Modification Date:	12/31/2013	Initials:	DKIM
Full Path:	16032101\...\C3D\SHEETS		
Drawing File Name:	160321 30 CST.dwg		
AutoCAD Version:	C3D 2011	Units:	English

Sheet Revisions

Date	Comments	Init.

Town of Nederland
 45 West First Street
 P O Box 396
 Nederland, Colorado 80466

HUITT-ZOLLARS
 4582 S. Ulster St, Ste 240
 Phone (303) 740-7325
 Denver, CO 80237
 Fax (303) 224-9997

- Progress Print -

No Revisions:	
Revised:	
Void:	

NEDERLAND PEDESTRIAN ENHANCEMENT DESIGN (NEDPED)
 AND STORM WATER MANAGEMENT IMPROVEMENT PROJECT
SITE PLAN
 STATE HWY 72 / 2ND ST (LINES 620 & 720)

Designer:	SEL	Structure Numbers	
Detailer:	DKIM		
Sheet Subset:	CST	Subset Sheets:	2 of 7

Project No. / Code

	STU M935-003
	18952 (Region 4)
	Sheet Number 32



Know what's below.
Call before you dig.

T.1S. R.73W.

SURFACING MATERIALS LEGEND	
PCC SIDEWALK:	
PCC CURB RAMP SCORE LINE:	
DETECTABLE WARNING:	
SIDEWALK (SPECIAL) (PCC HEADER):	
PCC DRIVEWAY:	
GRAVEL SURFACE:	
FINISHED GRADE TOE:	
FINISHED GRADE SAG LINE:	
CURB & GUTTER:	
HMA (MILL & OVERLAY):	
HMA (FULL DEPTH):	
2-8 CROSSWALK:	
NATIVE SEEDING:	
PICP ROADWAY:	
GUARDRAIL TY3:	
PCC RETAINING WALL:	

STA. 630+27+02 TO STA 630+45.27, RT
 ~REQ'D CURB & GUTTER TYPE 2 (SECTION I-B)
 ~REQ'D MEDIAN COVER MATERIAL (PCC)

STA. 630+54.19 TO STA 630+63.79, RT
 ~REQ'D CURB & GUTTER TYPE 2 (SECTION I-B)
 ~REQ'D MEDIAN COVER MATERIAL (PCC)

STA. 210+00 TO STA. 213+90, RT.
 ~REQ'D GRAVEL SURFACE
 ~REQ'D SIDEWALK (6-INCH)
 ~REQ'D GEOTEXTILE FILTER MATERIAL WITH
 AGGREGATE SUBBASE WITH UNDERDRAIN PIPE.

STA. 212+64 TO STA 212+80, LT
 ~REQ'D SIDEWALK (SPECIAL) W/ PCC HEADER TYPE 2

STA. 213+05.66 TO STA 213+15.33, LT.
 ~REQ'D PCC DRIVEWAY

STA. 210+60 TO STA 210+88, LT
 ~REQ'D SIDEWALK (SPECIAL) W/ PCC HEADER TYPE 1

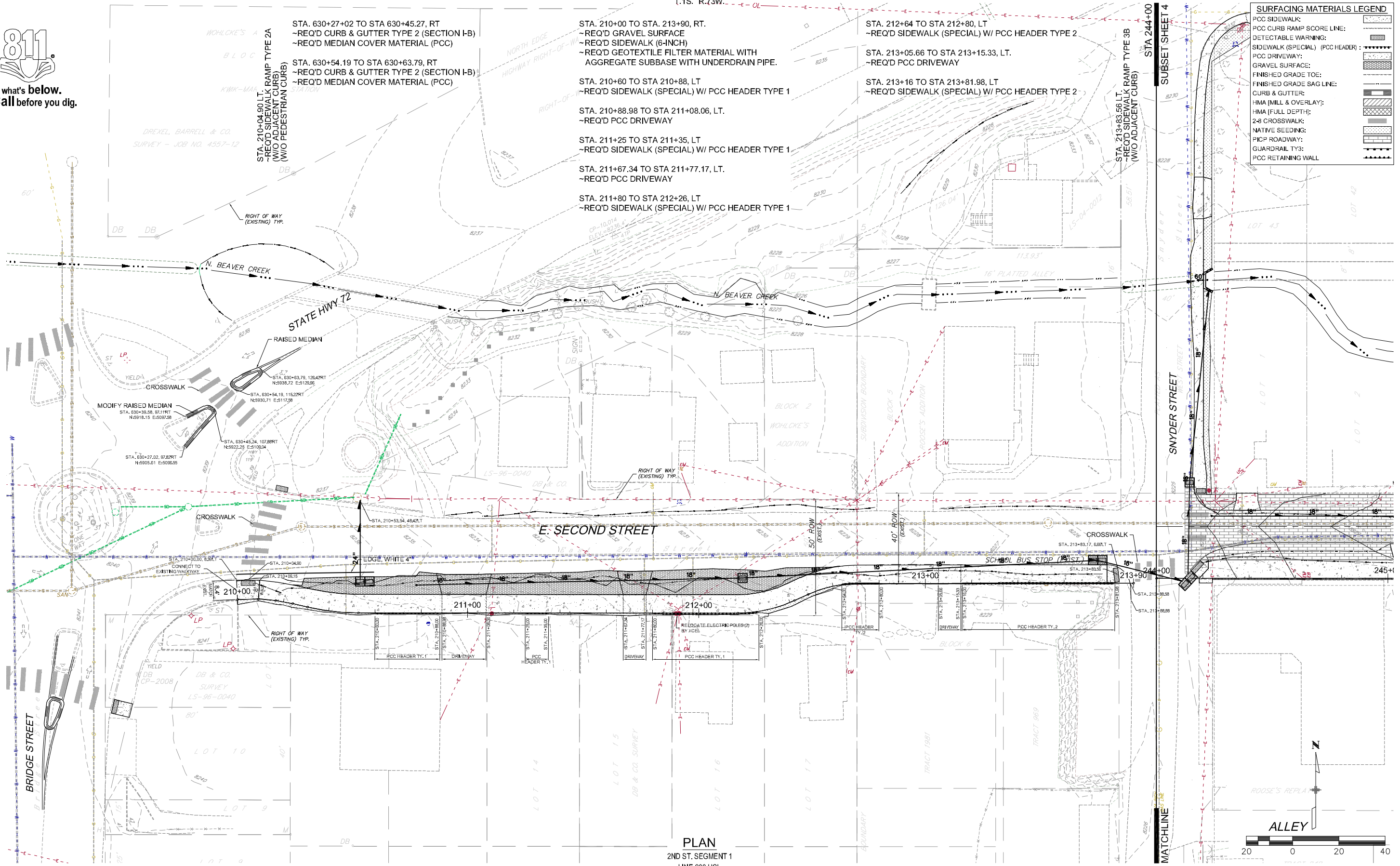
STA. 210+88.98 TO STA 211+08.06, LT.
 ~REQ'D PCC DRIVEWAY

STA. 213+16 TO STA 213+81.98, LT
 ~REQ'D SIDEWALK (SPECIAL) W/ PCC HEADER TYPE 2

STA. 211+25 TO STA 211+35, LT
 ~REQ'D SIDEWALK (SPECIAL) W/ PCC HEADER TYPE 1

STA. 211+67.34 TO STA 211+77.17, LT.
 ~REQ'D PCC DRIVEWAY

STA. 211+80 TO STA 212+26, LT
 ~REQ'D SIDEWALK (SPECIAL) W/ PCC HEADER TYPE 1



PLAN
 2ND ST. SEGMENT 1
 LINE 200 HCL



Computer File Information

Creation Date:	11/01/2012	Initials:	SEL
Last Modification Date:	10/30/2013	Initials:	DKIM
Full Path:	16032101\...C3D\SHEETS		
Drawing File Name:	160321 30 CST.dwg		
AutoCAD Version:	C3D 2011	Units:	English

Sheet Revisions

Date	Comments	Init.



Town of Nederland
 45 West First Street
 P O Box 396
 Nederland, Colorado 80466



4582 S. Ulster St, Ste 240
 Phone (303) 740-7325
 Denver, CO 80237
 Fax (303) 224-9997

- Progress Print -

No Revisions:	
Revised:	
Void:	

NEDERLAND PEDESTRIAN ENHANCEMENT DESIGN (NEDPED) AND STORM WATER MANAGEMENT IMPROVEMENT PROJECT

SITE PLAN	
2ND STREET SEGMENT 1 (LINE 210)	
Designer:	SEL
Detailer:	DKIM
Sheet Subset:	CST
Structure Numbers:	
Subset Sheets:	3 of 7

Project No. / Code

STU M935-003
18952 (Region 4)
Sheet Number 33

I:\proj\16032101 Nederland\11_DESIGN\CADD\C3D\SHEETS\160321 30 CST.dwg 10/31/13 14:15
 HUITT-ZOLLARS COPYRIGHT © 2011

T.1.S. R.73W.

SURFACING MATERIALS LEGEND

- PCC SIDEWALK / DRIVEWAY: [Symbol]
- PCC CURB RAMP SCORE LINE: [Symbol]
- DETECTABLE WARNING: [Symbol]
- SIDEWALK (SPECIAL) (PCC HEADER): [Symbol]
- GRAVEL SURFACE: [Symbol]
- FINISHED GRADE TOE: [Symbol]
- FINISHED GRADE SAG LINE: [Symbol]
- CURB & GUTTER: [Symbol]
- PCC VALLEY GUTTER: [Symbol]
- HMA (MILL & OVERLAY): [Symbol]
- HMA (FULL DEPTH): [Symbol]
- 2-8 CROSSWALK: [Symbol]
- NATIVE SEEDING: [Symbol]
- PICP ROADWAY: [Symbol]
- GUARDRAIL TY3: [Symbol]
- PCC RETAINING WALL: [Symbol]

STA. 244+26.25 TO STA. 244+49.23, LT.
 ~REQ'D SIDEWALK (6-INCH)
 [ADD ALTERNATE NO. 1]

STA. 244+23.95 TO STA. 244+23.95, LT
 ~REQ'D PCC DRIVEWAY
 [ADD ALTERNATE NO. 1]

STA. 244+00 TO STA. 250+00, LT.
 ~REQ'D REMOVAL OF GRAVEL ROAD.
 ~REQ'D SIDEWALK (6-INCH)
 ~REQ'D PICP WITH AGGREGATE BASE, GEOTEXTILE
 FILTER MATERIAL, AGGREGATE SUBBASE WITH
 UNDERDRAIN PIPE.
 ~REQ'D GRAVEL SURFACE
 ~REQ'D NATIVE LANDSCAPE

STA. 246+30.01 TO STA. 246+61.20, LT
 ~REQ'D PCC DRIVEWAY

STA. 247+90.73 TO STA. 247+66.48, LT
 ~REQ'D PCC DRIVEWAY

STA. 246+55.86 TO STA. 246+64.89, L&R
 ~REQ'D PCC DRIVEWAY

STA. 247+99.48 TO STA. 248+30.56, LT
 ~REQ'D AGGREGATE PARKING SURFACE

STA. 246+80 TO STA. 247+09, LT
 ~REQ'D SIDEWALK (SPECIAL) W/ PCC HEADER TYPE 2.

STA. 248+11.23 TO STA. 248+47.90, L&R
 ~REQ'D PCC DRIVEWAY

STA. 246+69.65 TO STA. 246+85.19, LT
 ~REQ'D PCC DRIVEWAY

STA. 248+30.56 TO STA. 248+69.88, LT
 ~REQ'D PCC DRIVEWAY

STA. 247+09.25 TO STA. 247+35.42, L&R
 ~REQ'D PCC DRIVEWAY

STA. 248+69.88 TO STA. 248+94.19, LT
 ~REQ'D AGGREGATE PARKING SURFACE

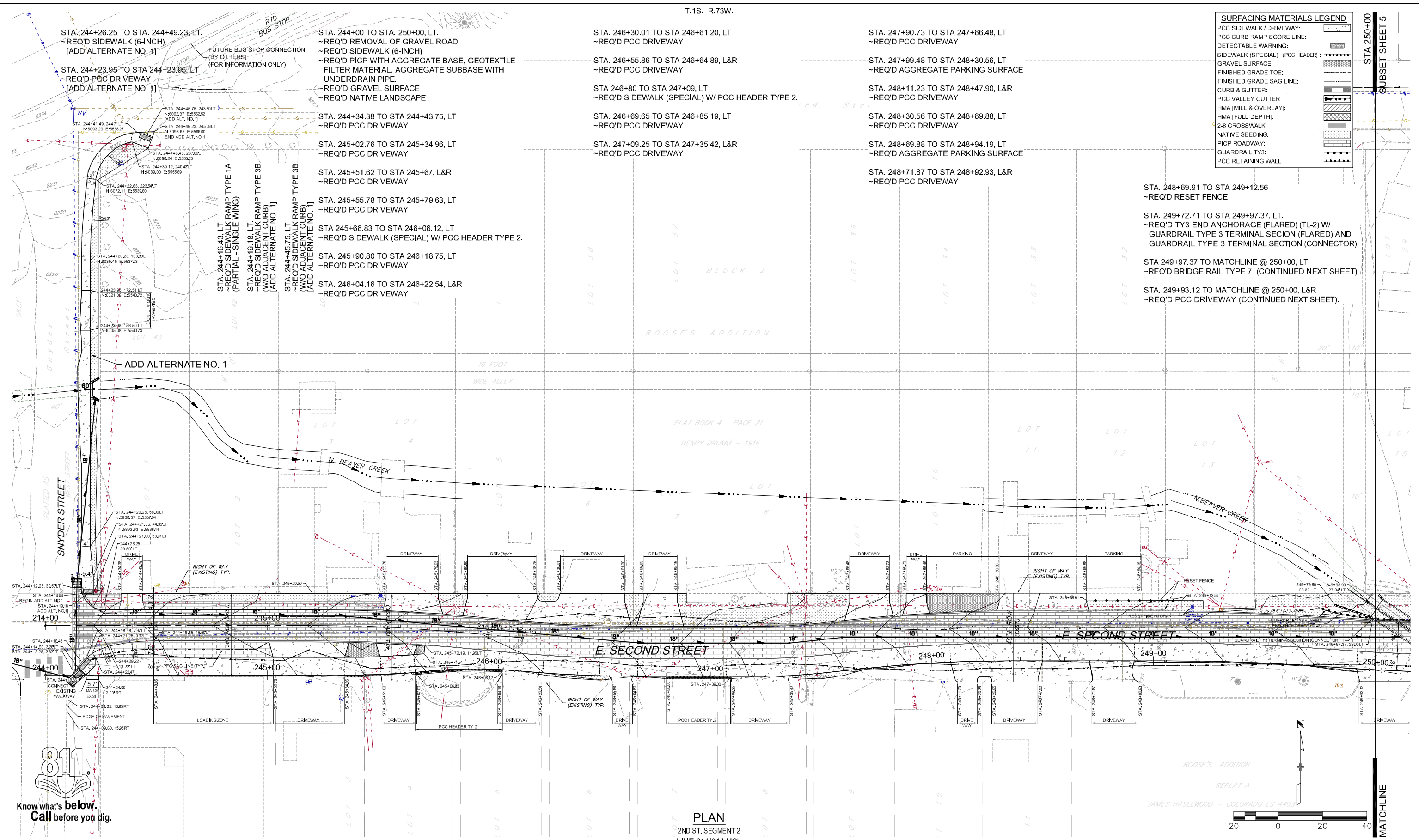
STA. 248+71.87 TO STA. 248+92.93, L&R
 ~REQ'D PCC DRIVEWAY

STA. 248+69.91 TO STA. 249+12.56
 ~REQ'D RESET FENCE.

STA. 249+72.71 TO STA. 249+97.37, LT.
 ~REQ'D TY3 END ANCHORAGE (FLARED) (TL-2) W/
 GUARDRAIL TYPE 3 TERMINAL SECTION (FLARED) AND
 GUARDRAIL TYPE 3 TERMINAL SECTION (CONNECTOR)

STA. 249+97.37 TO MATCHLINE @ 250+00, LT.
 ~REQ'D BRIDGE RAIL TYPE 7 (CONTINUED NEXT SHEET).

STA. 249+93.12 TO MATCHLINE @ 250+00, L&R
 ~REQ'D PCC DRIVEWAY (CONTINUED NEXT SHEET).



PLAN
 2ND ST. SEGMENT 2
 LINE 214/244 HCL

Computer File Information

Creation Date:	11/01/2012	Initials:	SEL
Last Modification Date:	12/31/2013	Initials:	DKIM
Full Path:	16032101\...C3D\SHEETS		
Drawing File Name:	160321 30 CST.dwg		
AutoCAD Version:	C3D 2011	Units:	English

Sheet Revisions

Date	Comments	Init.



Town of Nederland
 45 West First Street
 P O Box 396
 Nederland, Colorado 80466



4582 S. Ulster St, Ste 240
 Phone (303) 740-7325
 Denver, CO 80237
 Fax (303) 224-9997

- Progress Print -

No Revisions:	
Revised:	
Void:	

NEDERLAND PEDESTRIAN ENHANCEMENT DESIGN (NEDPED) AND STORM WATER MANAGEMENT IMPROVEMENT PROJECT

SITE PLAN		
2ND STREET SEGMENT 1 (LINE 210)		
Designer:	SEL	Structure Numbers
Detailer:	DKIM	
Sheet Subset:	CST	Subset Sheets: 4 of 7

Project No. / Code

STU M935-003	18952 (Region 4)
	Sheet Number 34

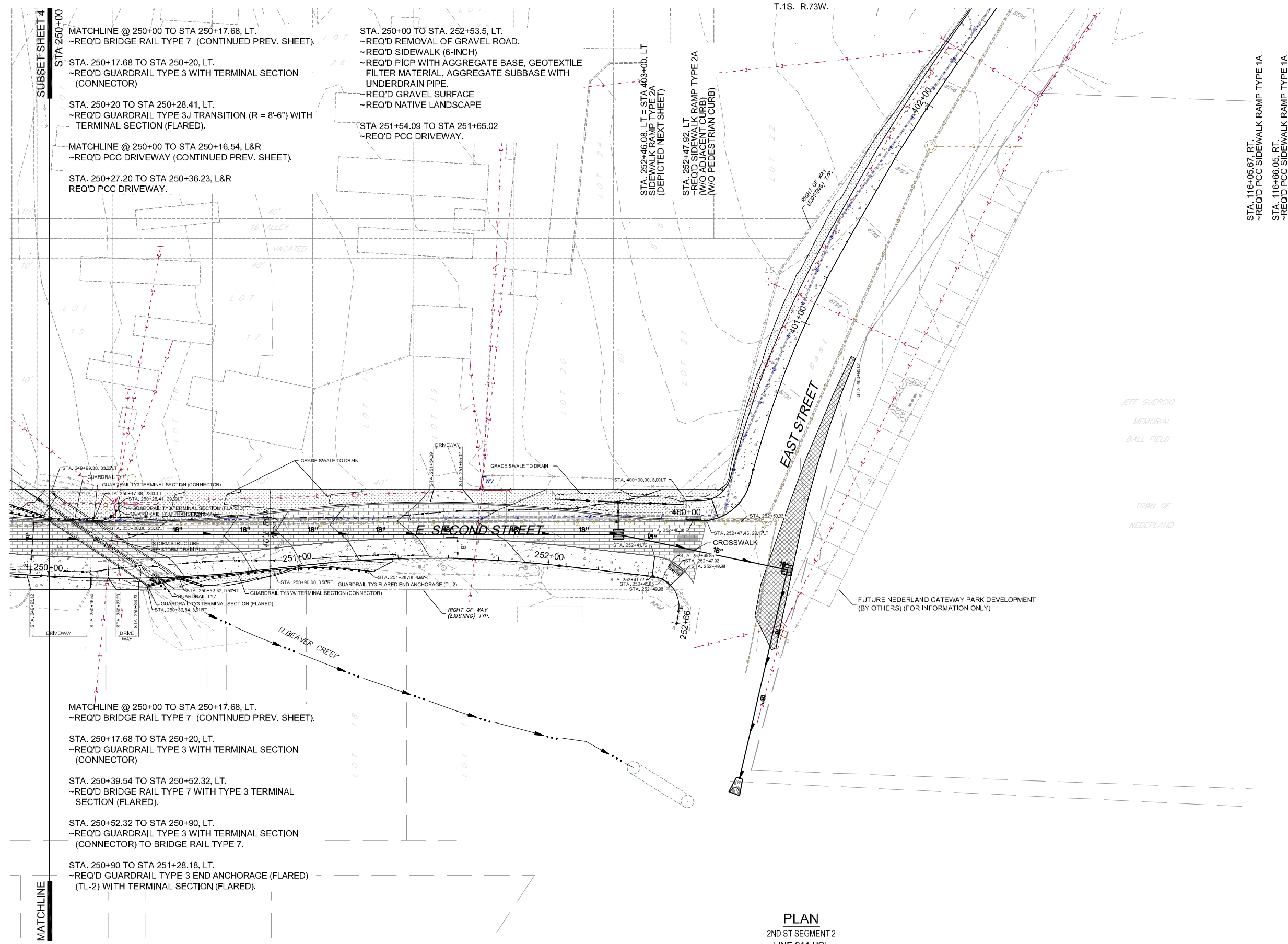
I:\prof\16032101 Nederland\11_DESIGN\CADD\C3D\SHEETS\160321 30 CST.dwg 1/02/14 16:34 HUITT-ZOLLARS COPYRIGHT © 2011





Know what's below.
Call before you dig.

T.1S. R.73W.



SUBSET SHEET 4

MATCHLINE

MATCHLINE @ 250+00 TO STA 250+17.68, LT.
~REQ'D BRIDGE RAIL TYPE 7 (CONTINUED PREV. SHEET).

STA. 250+17.68 TO STA 250+20, LT.
~REQ'D GUARDRAIL TYPE 3 WITH TERMINAL SECTION (CONNECTOR)

STA. 250+20 TO STA 250+28.41, LT.
~REQ'D GUARDRAIL TYPE 3J TRANSITION (R = 8'-6") WITH TERMINAL SECTION (FLARED).

MATCHLINE @ 250+00 TO STA 250+16.54, L&R
~REQ'D PCC DRIVEWAY (CONTINUED PREV. SHEET).

STA. 250+27.20 TO STA 250+36.23, L&R
REQ'D PCC DRIVEWAY.

STA. 250+00 TO STA. 252+53.5, LT.
~REQ'D REMOVAL OF GRAVEL ROAD.
~REQ'D SIDEWALK (6-INCH)
~REQ'D PCCP WITH AGGREGATE BASE, GEOTEXTILE FILTER MATERIAL, AGGREGATE SUBBASE WITH UNDERDRAIN PIPE.
~REQ'D GRAVEL SURFACE
~REQ'D NATIVE LANDSCAPE

STA 251+54.09 TO STA 251+65.02
~REQ'D PCC DRIVEWAY.

STA. 252+46.08, LT. = STA 403+00, LT.
SIDEWALK RAMP TYPE 2A (DEPICTED NEXT SHEET)

STA. 252+47.92, LT.
~REQ'D SIDEWALK RAMP TYPE 2A (W/O ADJACENT CURB)
~REQ'D PEDESTRIAN CURB (W/O PEDESTRIAN CURB)

STA. 116+05.67, RT.
~REQ'D PCC SIDEWALK RAMP TYPE 1A

STA. 116+66.05, RT.
~REQ'D PCC SIDEWALK RAMP TYPE 1A

MATCHLINE @ 250+00 TO STA 250+17.68, LT.
~REQ'D BRIDGE RAIL TYPE 7 (CONTINUED PREV. SHEET).

STA. 250+17.68 TO STA 250+20, LT.
~REQ'D GUARDRAIL TYPE 3 WITH TERMINAL SECTION (CONNECTOR)

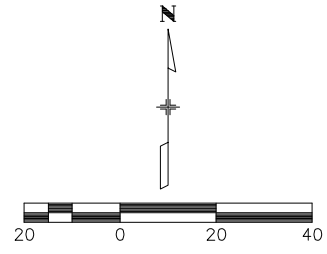
STA. 250+39.54 TO STA 250+52.32, LT.
~REQ'D BRIDGE RAIL TYPE 7 WITH TYPE 3 TERMINAL SECTION (FLARED).

STA. 250+52.32 TO STA 250+90, LT.
~REQ'D GUARDRAIL TYPE 3 WITH TERMINAL SECTION (CONNECTOR) TO BRIDGE RAIL TYPE 7.

STA. 250+90 TO STA 251+28.18, LT.
~REQ'D GUARDRAIL TYPE 3 END ANCHORAGE (FLARED) (TL-2) WITH TERMINAL SECTION (FLARED).

SURFACING MATERIALS LEGEND

- PCC SIDEWALK: [Pattern]
- PCC CURB RAMP SCORE LINE: [Pattern]
- DETECTABLE WARNING: [Pattern]
- SIDEWALK (SPECIAL) (PCC HEADER): [Pattern]
- PCC DRIVEWAY: [Pattern]
- GRAVEL SURFACE: [Pattern]
- FINISHED GRADE TOE: [Pattern]
- FINISHED GRADE SAG LINE: [Pattern]
- CURB & GUTTER: [Pattern]
- HMA (MILL & OVERLAY): [Pattern]
- HMA (FULL DEPTH): [Pattern]
- 2-8 CROSSWALK: [Pattern]
- NATIVE SEEDING: [Pattern]
- PICP ROADWAY: [Pattern]
- GUARDRAIL TY3: [Pattern]
- PCC RETAINING WALL: [Pattern]



PLAN
2ND ST SEGMENT 2
LINE 244 HCL

Computer File Information

Creation Date:	11/01/2012	Initials:	SEL
Last Modification Date:	10/30/2013	Initials:	DKIM
Full Path:	16032101\...C3D\SHEETS		
Drawing File Name:	160321 30 CST.dwg		
AutoCAD Version:	C3D 2011	Units:	English

Sheet Revisions

Date	Comments	Init.



Town of Nederland
45 West First Street
P O Box 396
Nederland, Colorado 80466



4582 S. Ulster St, Ste 240
Phone (303) 740-7325
Denver, CO 80237
Fax (303) 224-9997

- Progress Print -

No Revisions:	
Revised:	
Void:	

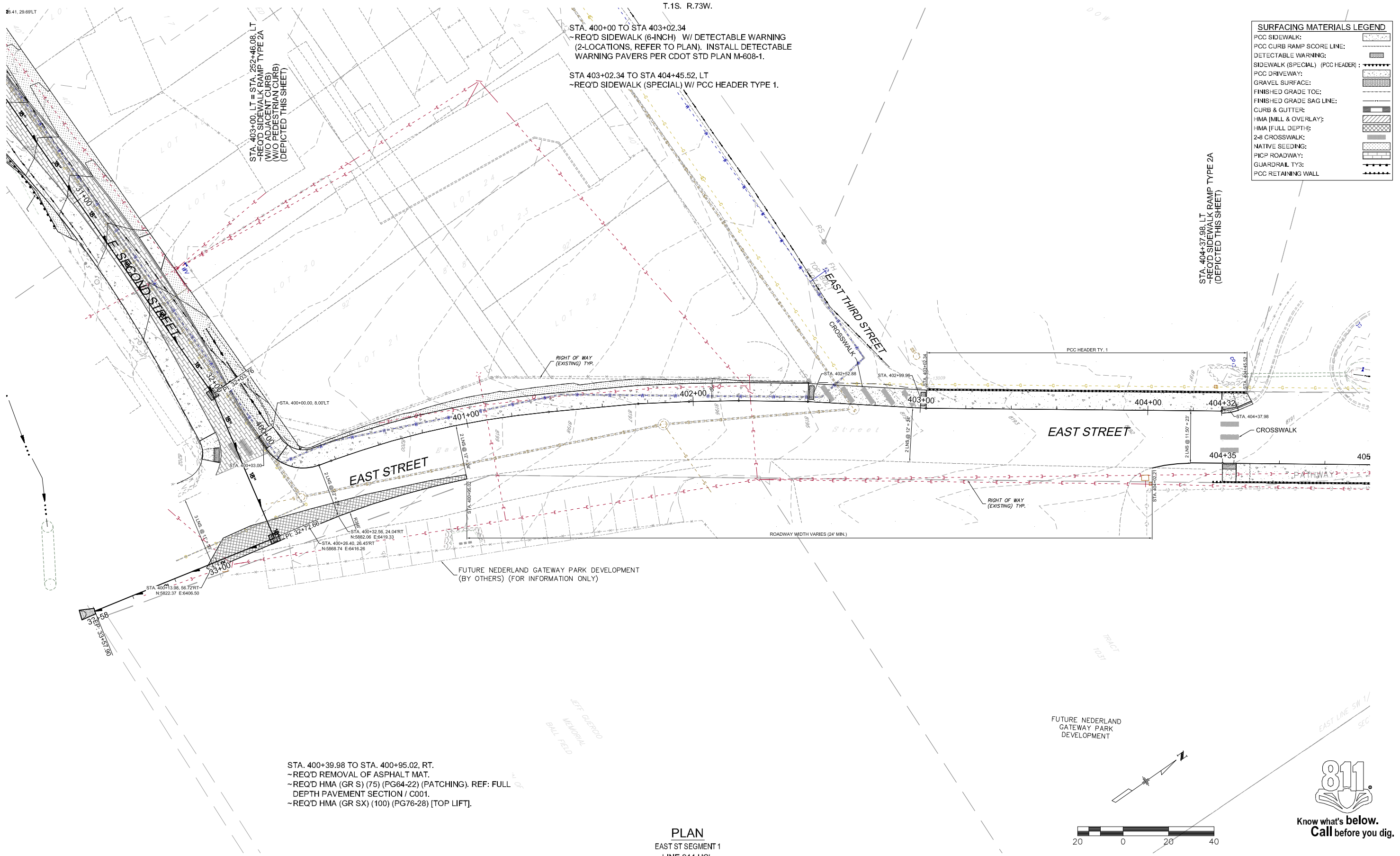
NEDERLAND PEDESTRIAN ENHANCEMENT DESIGN (NEDPED)
AND STORM WATER MANAGEMENT IMPROVEMENT PROJECT
SITE PLAN

2ND STREET SEGMENT 1 (LINE 210)		
Designer:	SEL	Structure Numbers
Detailer:	DKIM	
Sheet Subset:	CST	Subset Sheets: 5 of 7

Project No. / Code

STU M935-003	18952 (Region 4)
Sheet Number	35

I:\prof\16032101 Nederland\11_DESIGN\CADD\C3D\SHEETS\160321 30 CST.dwg 10/31/13 12:21 HUITT-ZOLLARS COPYRIGHT © 2011

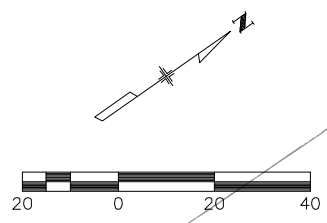


SURFACING MATERIALS LEGEND

- PCC SIDEWALK: [Symbol]
- PCC CURB RAMP SCORE LINE: [Symbol]
- DETECTABLE WARNING: [Symbol]
- SIDEWALK (SPECIAL) (PCC HEADER): [Symbol]
- PCC DRIVEWAY: [Symbol]
- GRAVEL SURFACE: [Symbol]
- FINISHED GRADE TOE: [Symbol]
- FINISHED GRADE SAG LINE: [Symbol]
- CURB & GUTTER: [Symbol]
- HMA (MILL & OVERLAY): [Symbol]
- HMA (FULL DEPTH): [Symbol]
- 2-8 CROSSWALK: [Symbol]
- NATIVE SEEDING: [Symbol]
- PICP ROADWAY: [Symbol]
- GUARDRAIL TY3: [Symbol]
- PCC RETAINING WALL: [Symbol]

STA. 400+39.98 TO STA. 400+95.02, RT.
 ~REQ'D REMOVAL OF ASPHALT MAT.
 ~REQ'D HMA (GR S) (75) (PG64-22) (PATCHING). REF: FULL DEPTH PAVEMENT SECTION / C001.
 ~REQ'D HMA (GR SX) (100) (PG76-28) [TOP LIFT].


PLAN
 EAST ST SEGMENT 1
 LINE 244 HCL



I:\proj\16032101 Nederland\11_DESIGN\CADD\C3D\SHEETS\160321 30 CST.dwg 10/31/13 12:21
 HUITT-ZOLLARS COPYRIGHT © 2011

Computer File Information			
Creation Date:	11/01/2012	Initials:	SEL
Last Modification Date:	10/30/2013	Initials:	DKIM
Full Path:	16032101\...\C3D\SHEETS		
Drawing File Name:	160321 30 CST.dwg		
AutoCAD Version:	C3D 2011	Units:	English

Sheet Revisions			
Date	Comments	Init.	
			(R-)
			(R-)
			(R-)


 Town of Nederland
 45 West First Street
 P O Box 396
 Nederland, Colorado 80466


 4582 S. Ulster St, Ste 240
 Phone (303) 740-7325
 Denver, CO 80237
 Fax (303) 224-9997

- Progress Print -

No Revisions:	
Revised:	
Void:	

NEDERLAND PEDESTRIAN ENHANCEMENT DESIGN (NEDPED) AND STORM WATER MANAGEMENT IMPROVEMENT PROJECT			
SITE PLAN			
EAST STREET SEGMENT 1 (LINE 400)			
Designer:	SEL	Structure Numbers:	
Detailer:	DKIM	Sheet Subset:	CST
Sheet Subset:	CST	Subset Sheets:	6 of 7

Project No. / Code	STU M935-003
	18952 (Region 4)
Sheet Number	36



Know what's below.
Call before you dig.

T.1S. R.73W.

SURFACING MATERIALS LEGEND	
PCC SIDEWALK:	
PCC CURB RAMP SCORE LINE:	
DETECTABLE WARNING:	
SIDEWALK (SPECIAL) (PCC HEADER):	
PCC DRIVEWAY:	
GRAVEL SURFACE:	
FINISHED GRADE TOE:	
FINISHED GRADE SAG LINE:	
CURB & GUTTER:	
HMA (MILL & OVERLAY):	
HMA (FULL DEPTH):	
2-8 CROSSWALK:	
NATIVE SEEDING:	
PICP ROADWAY:	
GUARDRAIL TY3:	
PCC RETAINING WALL:	

STA. 404+37.98, LT
SIDEWALK RAMP TYPE 2A
(DEPICTED PREV. SHEET)

UNITED STATES
POST OFFICE

STATE HWY 119

ADD ALTERNATE NO. 2

CROSSWALK

409+98

STA 401+95.77 TO STA 409+46.20, RT
-REQ'D SIDEWALK (SPECIAL) W/ PCC HEADER TYPE 3.

STA. 409+46.20 TO STA 409+98, RT
REQ'D SIDEWALK (6-INCH)

STA. 407+88.78 TO STA 409+44.21, LT.
-REQ'D GUARDRAIL TYPE 3 WITH TERMINAL SECTION
(FLARED) (TL-3).

STA. 409+44.21 TO STA 409+68.33, LT.
-REQ'D GUARDRAIL TYPE 3J TRANSITION (R = 35')

STA. 409+68.33 TO STA 410+13, LT.
-REQ'D GUARDRAIL TYPE 3 WITH TERMINAL SECTION
(FLARED) (TL-3).

STA 404+29.10 TO STA 406+40.87, RT
-REQ'D SIDEWALK (SPECIAL) W/ PCC HEADER TYPE 1.

STA. 406+40.87 TO STA 406+55.34, RT
-REQ'D SIDEWALK (6-INCH)

STA 406+55.34 TO STA 406+89.08, RT
-REQ'D SIDEWALK (SPECIAL) W/ PCC HEADER TYPE 1.

STA. 406+89.08 TO STA 407+95.77, RT
-REQ'D SIDEWALK (6-INCH) W/ DETECTABLE WARNING
(2-LOCATIONS, REFER TO PLAN). INSTALL DETECTABLE
WARNING PAVERS PER CDOT STD PLAN M-608-1.

STA. 409+78.45, LT
-REQ'D SIDEWALK RAMP TYPE 2A
(W/O ADJACENT CURB)
(W/O PEDESTRIAN CURB)

CONNECT TO
EXISTING SIDEWALK

RIGHT OF WAY
(EXISTING) TYP.

CROSSWALK

OVERHEAD
UTILITY LINES

SOUTH EDGE
RIGHT-OF-WAY



PLAN
EAST ST. SEGMENT 2
LINE 404 HCL

Computer File Information

Creation Date:	11/01/2012	Initials:	SEL
Last Modification Date:	10/30/2013	Initials:	DKIM
Full Path:	16032101\...\C3D\SHEETS		
Drawing File Name:	160321 30 CST.dwg		
AutoCAD Version:	C3D 2011	Units:	English

Sheet Revisions

Date	Comments	Init.

Town of Nederland
45 West First Street
P O Box 396
Nederland, Colorado 80466

HUITT-ZOLLARS
4582 S. Ulster St, Ste 240
Phone (303) 740-7325
Denver, CO 80237
Fax (303) 224-9997

- Progress Print -

No Revisions:	
Revised:	
Void:	

NEDERLAND PEDESTRIAN ENHANCEMENT DESIGN (NEDPED)
AND STORM WATER MANAGEMENT IMPROVEMENT PROJECT

SITE PLAN
EAST STREET SEGMENT 2 (LINE 404)

Designer:	SEL	Structure Numbers	
Detailer:	DKIM		
Sheet Subset:	CST	Subset Sheets:	7 of 7

Project No. / Code

STU M935-003	
18952 (Region 4)	
Sheet Number	37

I:\proj\16032101 Nederland\11_DESIGN\CADD\C3D\SHEETS\160321 30 CST.dwg 10/31/13 10:14
HUITT-ZOLLARS COPYRIGHT © 2011